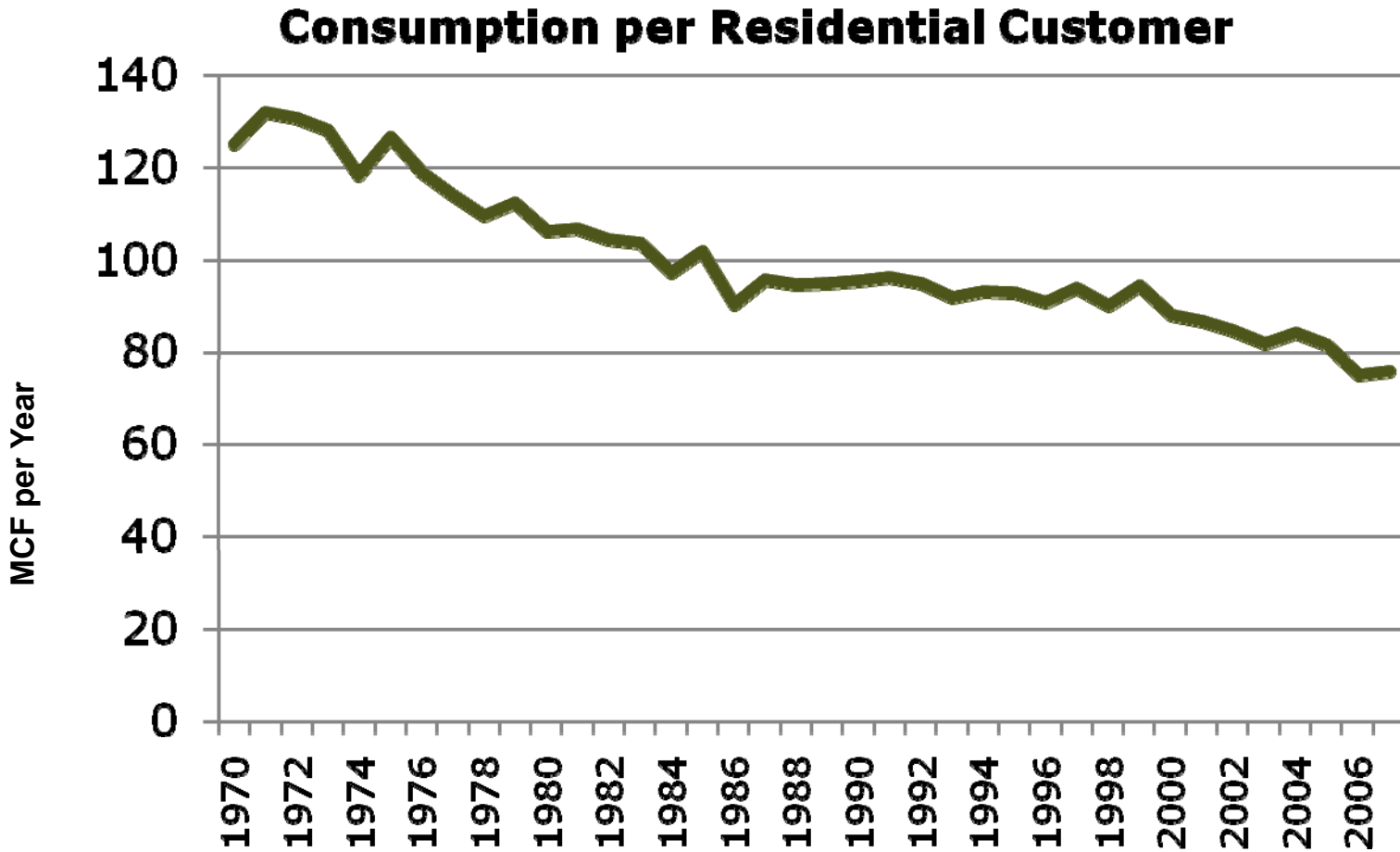
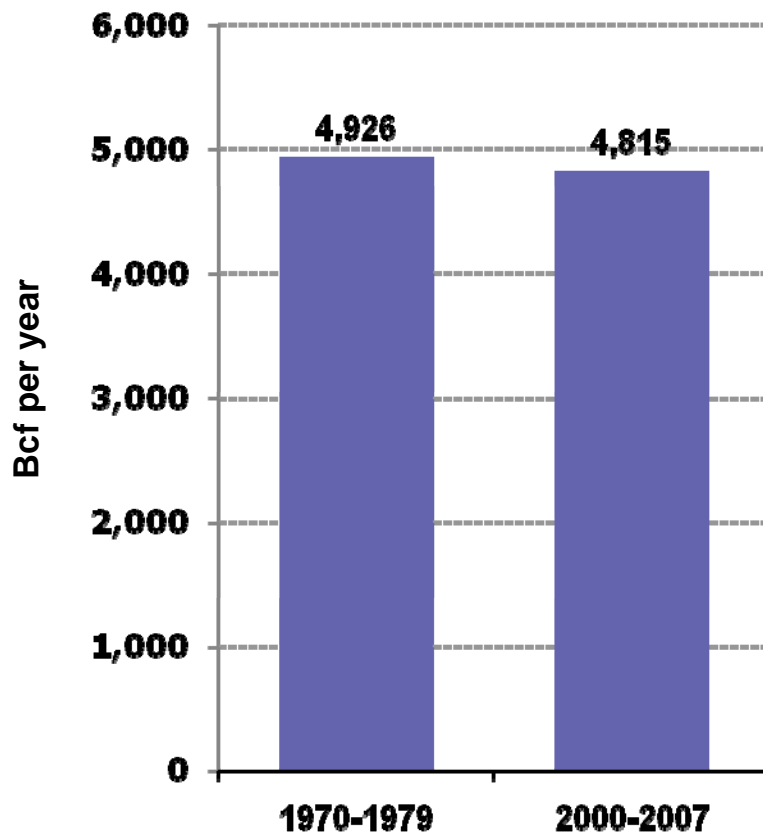


Declining Use per Natural Gas Residential Customer Since 1970

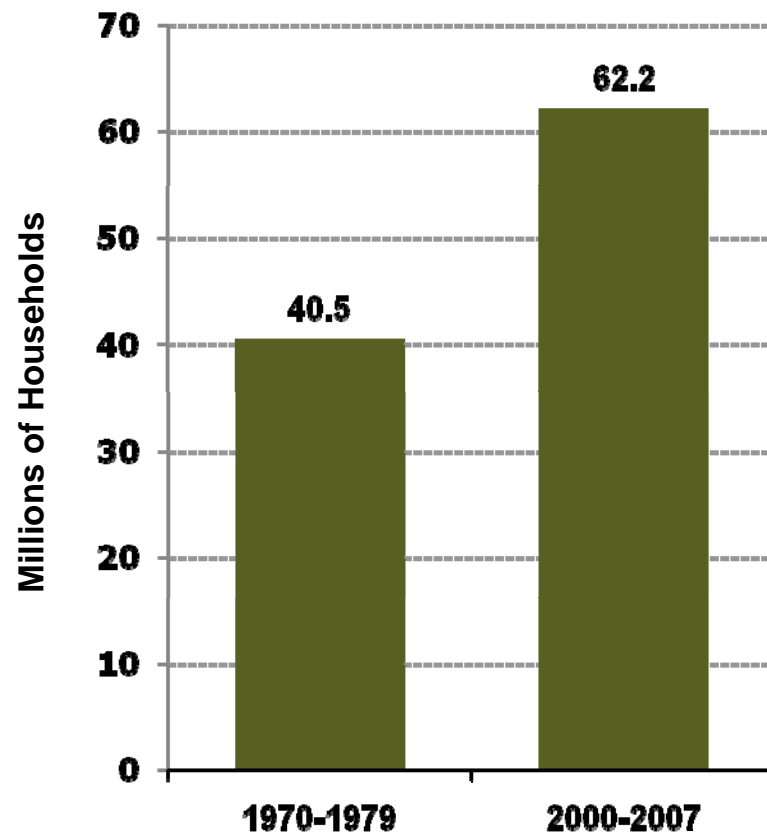


Residential Natural Gas: Average Consumption vs. Average Number of Customers

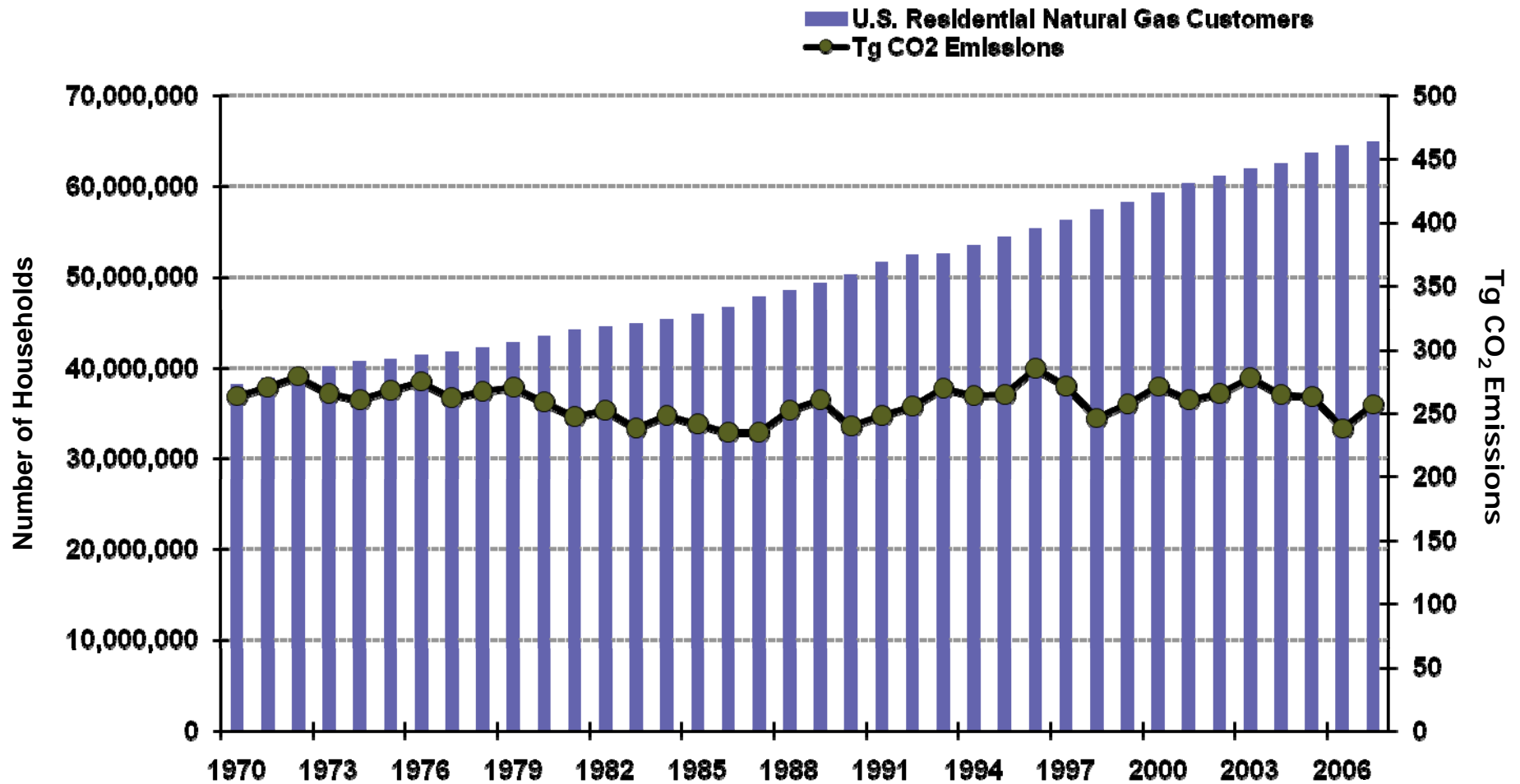
Average Total Natural Gas Residential Consumption



Average Number of Households Served

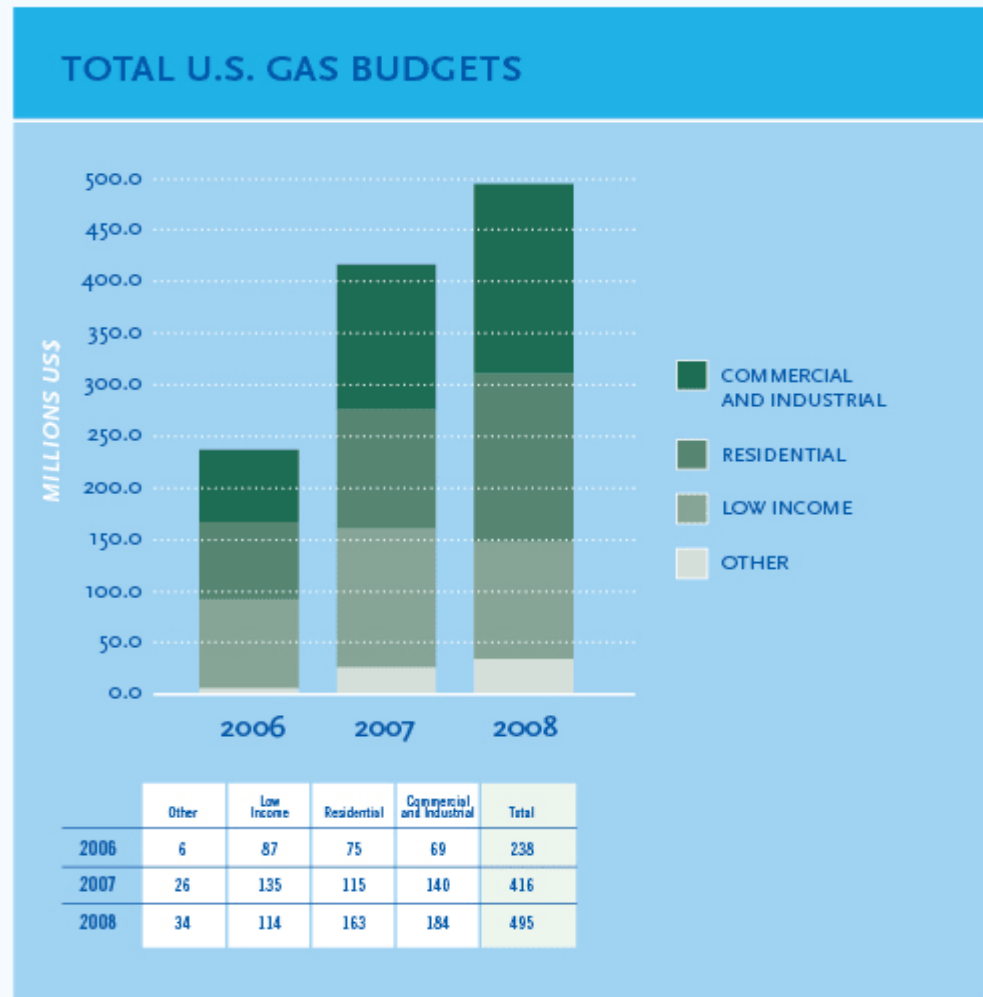


U.S. Natural Gas Customers Lead in Reducing Greenhouse Gas Emissions



Natural Gas Utility Energy Efficiency Programs

- In the 2007 program year, gas utilities in the U.S. budgeted nearly \$500 million for energy efficiency programs
- About a third (\$163 million) was budgeted for residential programs
- Program budgets have more than doubled since 2006



Nevius M, Krouk J, Griffith S, Lasky C, "Reaching Higher: Annual Industry Report 2008," Consortium for Energy Efficiency, 2008.

Natural Gas Utility Energy Efficiency Programs

UNITED STATES

TABLE 12:

Estimated 2007 U.S. Annual Energy Savings Impacts

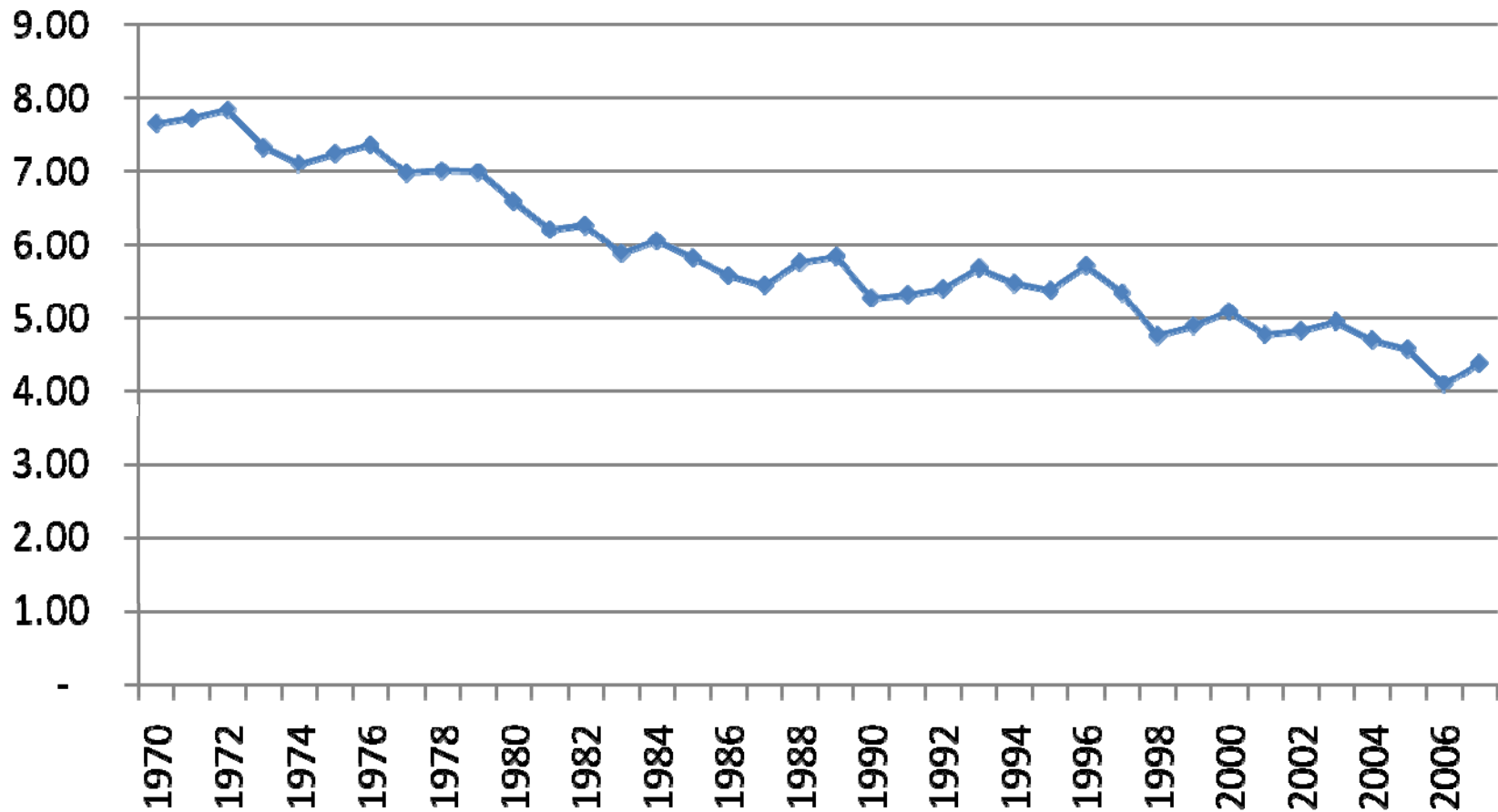
CEE MEMBERS' PROGRAMS¹

	RESIDENTIAL	LOW INCOME	COMMERCIAL AND INDUSTRIAL	OTHER	TOTAL
ELECTRIC (GWH)					
Midwest	1,236	47	4,320	43	5,645
New England/Midatlantic	3,973	211	9,581	74	13,839
Pacific Northwest	3,096	188	4,780	321	8,385
South	1,740	16	1,534	0	3,289
Southwest	1,065	5	2,144	0	3,214
West	8,303	518	16,968	2,635	28,423
Total	19,413	954	39,327	3,072	62,796
GAS (MILLIONS OF THERMS)					
Midwest	40.466	3.576	81.468	0.025	125.534
New England/Midatlantic	9.178	1.610	6.690	5.261	22.739
Northwest	3.362	0.177	3.671	0.007	7.217
All Other States (Southwest and California)	8.580	2.487	50.682	0.850	62.599
Total	61.585	7.849	142.512	6.143	218.090

Impacts of gas utility energy efficiency programs in 2007:

- **218 million therms** saved
- Nearly **1.3 million tons of CO₂** prevented from being released into the atmosphere

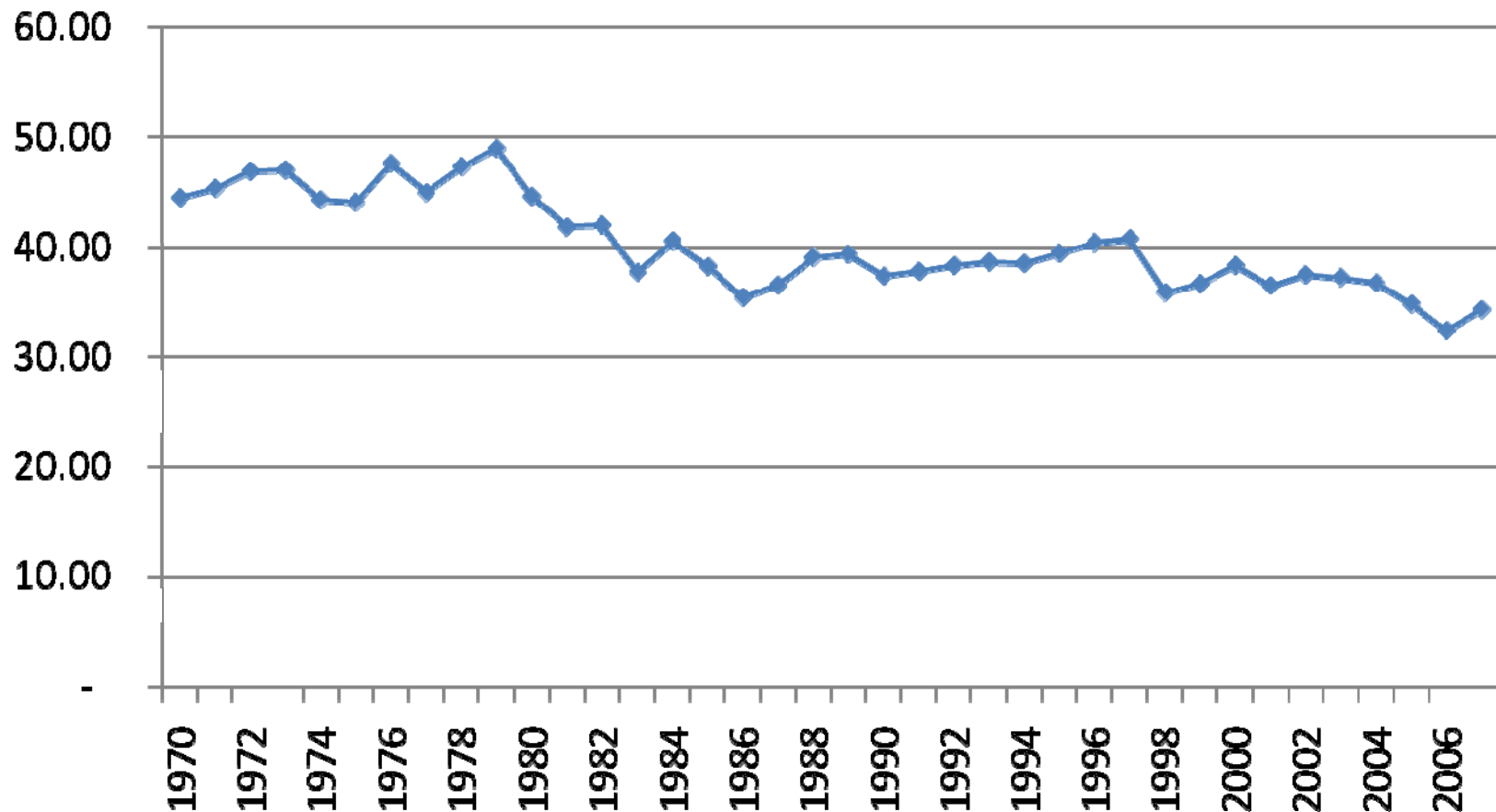
Tons of CO2 Emissions* Per Residential Natural Gas Customer



*From consumption of natural gas only

Source: Calculated from Energy Information Administration data

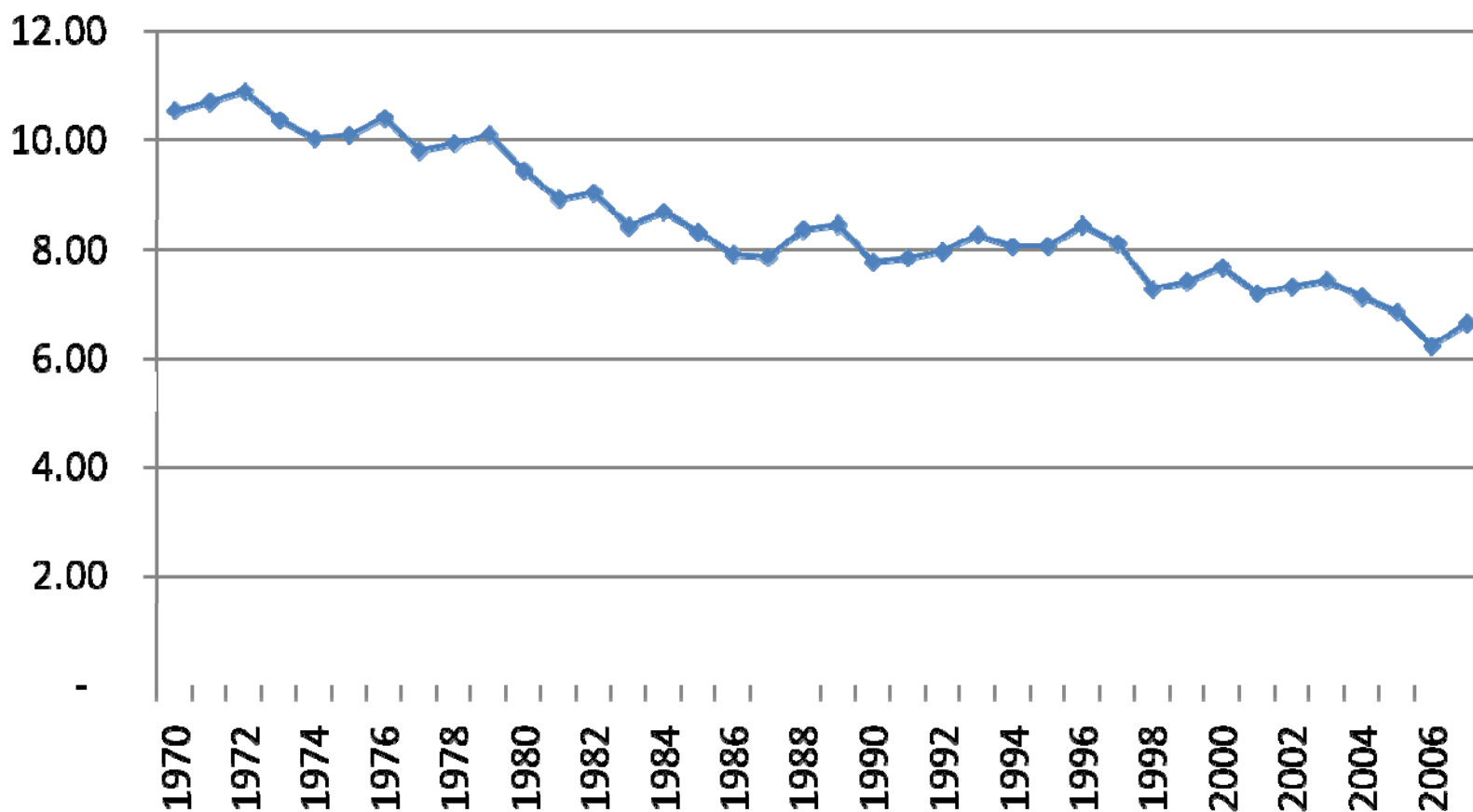
Tons of CO2 Emissions* Per Commercial Natural Gas Customer



*From consumption of natural gas only

Source: Calculated from Energy Information Administration data

Tons of CO2 Emissions* Per Residential and Commercial Natural Gas Customer



*From consumption of natural gas only

Source: Calculated from Energy Information Administration data