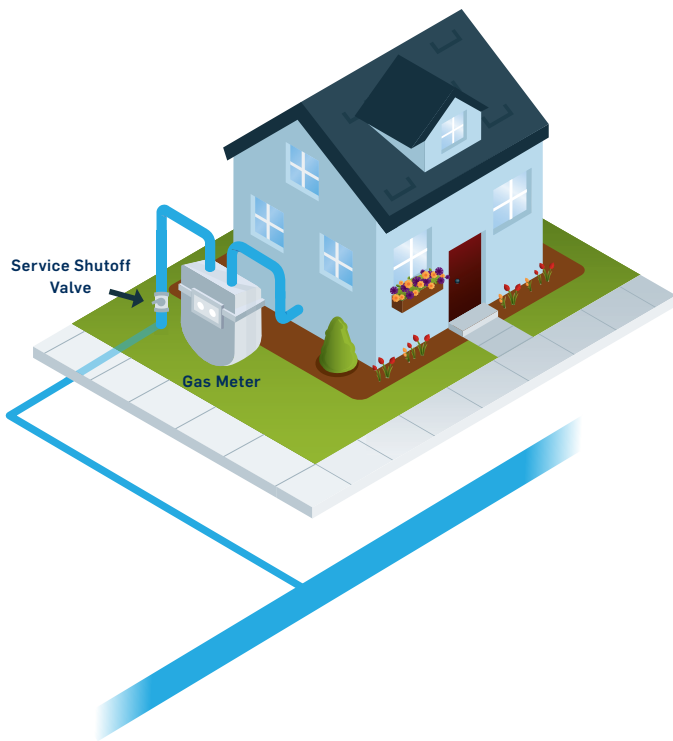


# Consumer Natural Gas SERVICE SCHEMATICS

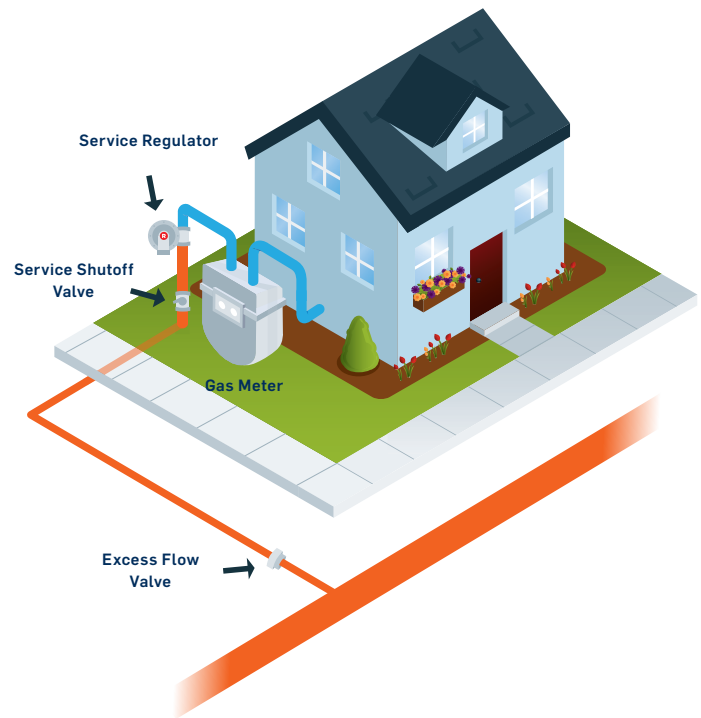


## Utilization Pressure System



● Utilization Pressure System  
(typically below 1psig)

## High/Medium Pressure System



● High/Medium Pressure System  
(typically below 125psig)

● Utilization Pressure System  
(typically below 1psig)

### Utilization Pressure System

A network of natural gas pipelines where the gas pressure in the mains and services is the same as the pressure going into a house/dwelling (typically less than 1psig). Sometimes called “low pressure systems”

### Service Line

Natural gas pipeline used to supply natural gas from distribution gas main to customer gas meter

### Gas Meter

Measures customer gas usage. May be outside or inside building

### Service Regulator

Reduces natural gas pressure to utilization pressure (typically less than 1 psig) at the house. Device typically contains internal pressure relief to prevent over-pressurization

### Excess Flow Valve (EFV)

Automatically shuts off customer gas service when excess flow is detected. EFVs have been required since 2010 for new and refurbished services or by customer request. EFVs work at pressure above 10psig and therefore not on utilization systems