

2020 – July 16 – Editorial Section

Approved additions and deletions to guide material under §192.383. **Ready for 2nd LB.**

PRIMARY: 192.381, 383

PURPOSE: Review Amdt. 192-121 (see below) and revise existing GM as appropriate. **Review existing GM and revise as appropriate in light of PHMSA Webinar on EFV Q&A (additional purpose added by Executive in lieu of TR 17-27).** (Q&As shown below Amdt. 192-121 on page 23 of this TR.)

ORIGIN/RATIONALE: Amdt. 192-121

RESPONSIBLE GROUP : Design Task Group

LB Processing Note: The proposed changes from 1st LB in LB5-2018 are shown in **yellow highlight**.

[Publication Note: The titles for the 4 figures and the ending GM text in 1.2 and 1.3 under §192.383 are missing in the Guide with Addenda 1-5, but were present in the Guide with Addenda 1-4.]

Section 192.383

~~This guide material is under review following Amendment 192-121.~~

1 EXCESS FLOW VALVES (EFV) INSTALLATIONS

1.1 General.

~~Section 192.383 requires an EFV to be installed on new or replaced service lines to single-family residences unless one or more of four conditions listed in §192.383(c) is present. The following guide material provides installation considerations for EFVs. Also, see 4 of the guide material under §192.381.~~

~~Unless one or more of four conditions listed in §192.383(c) is present (service line does not operate at a pressure of at least 10 psig throughout the year, contaminants in the gas stream could interfere with the EFV's operation or cause loss of service to the customer, EFV could interfere with required operation or maintenance activities such as blowing liquids from the line, or an EFV is not commercially available for the application), §192.383 requires an EFV to be installed at the time of installation of new or replaced service lines that serve **one of** the following.~~

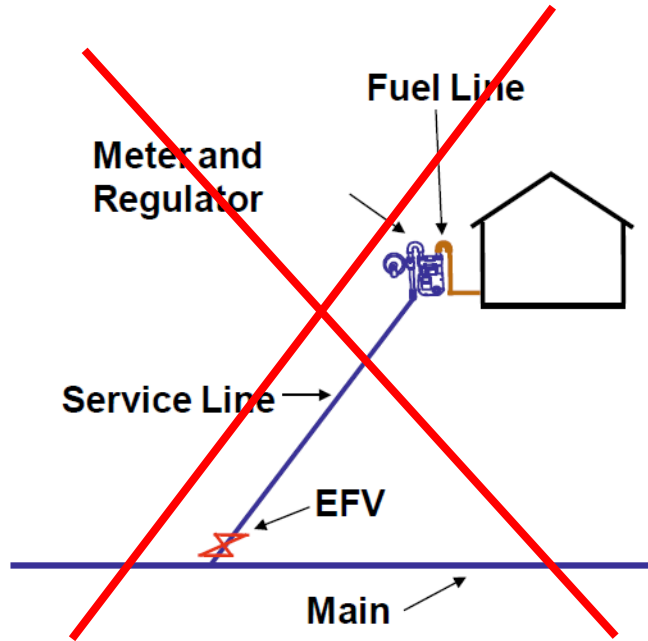
- ~~(a) A single-family residence.~~
- ~~(b) A single-family residence on a branched service line that is installed concurrently with the primary single-family residence service line. A single EFV may be installed to protect both the primary and the branched service lines.~~
- ~~(cb) A single-family residence, **which** that is branched from an existing service line **that does not have an EFV.**~~
- ~~(de) A multi-family residence with **a total meter capacityies** not exceeding 1,000 SCFH **for the service line.**~~
- ~~(ed) A single, small commercial customer with meter capacity not exceeding 1,000 SCFH.~~

1.2 Service line supplying a single-family residence.

~~(a) **As required by §192.383(b)(1) and except for the limitations of §192.383(c), an operator must install an EFV on a new or replaced service line to a single-family residence.** The following illustrations (Figures 192.383A and 192.383B) show where an EFV should normally be installed on a service line to **a single-family residence to** comply with §192.381(d). For other EFV installation considerations, see guide material under §192.381.~~

EFV with Meter Located at Residence

[Editorial Note for LB: Delete drawing]



[Editorial Note for LB: Add drawing]

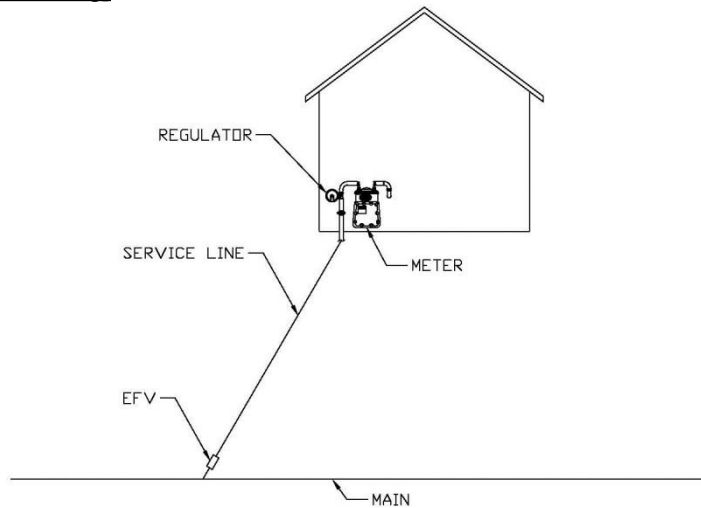
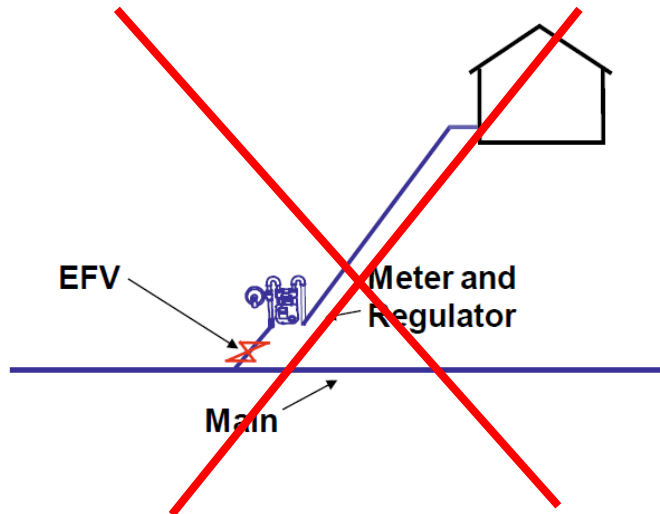


FIGURE 192.383A

EFV with Meter Located in the Vicinity of the Main

[Editorial Note for LB: Delete drawing]



[Editorial Note for LB: Add drawing]

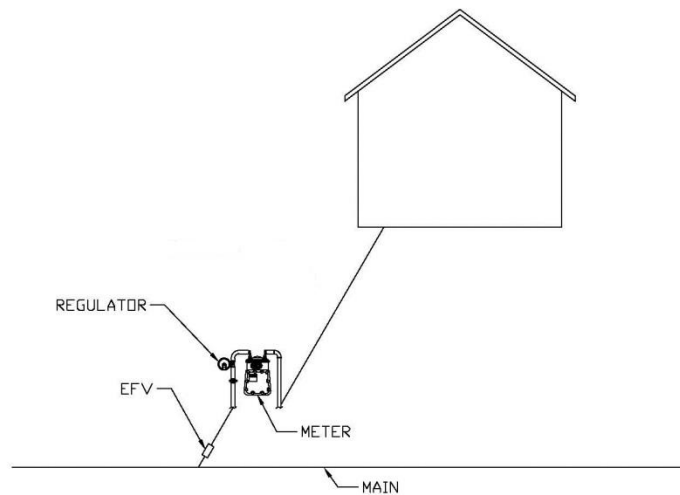


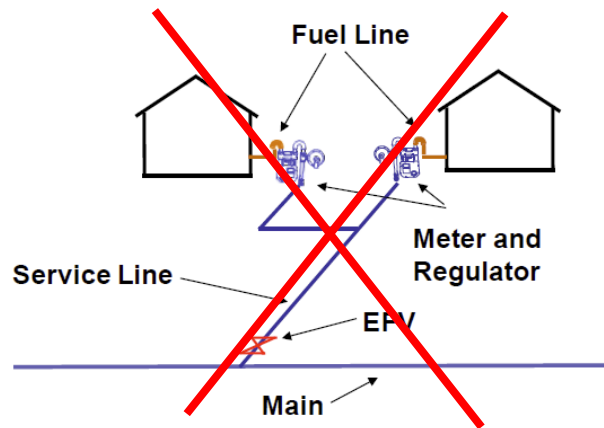
FIGURE 192.383B

1.3 Service line supplying multiple adjacent single-family residences. ~~An Per §192.383, an As required by §192.383(b)(2) and (3) and except for the limitations of §192.383(c), an operator may choose to must~~ install an EFV on a new or replaced branch service line to multiple adjacent single-family residences. ~~An EFV may not be practical in certain installations such as branch (split) service lines or multiple-meter manifolds due to the varying loads of multiple residences.~~ Examples of a service line to multiple adjacent single-family residences are illustrated in Figures 192.383C and 192.383D. ~~For other EFV installation considerations, see the conditions listed in §192.383(c) and the guide material under §192.381.~~

Branch EFV for New or Replaced Service Line Serving 2 Two Single-Family Residences with 4 One EFV

Note: The branched service line may be installed at the same time as the original service line or it may be installed afterwards.

[Editorial Note for LB: Delete drawing]



[Editorial Note for LB: Add drawing]

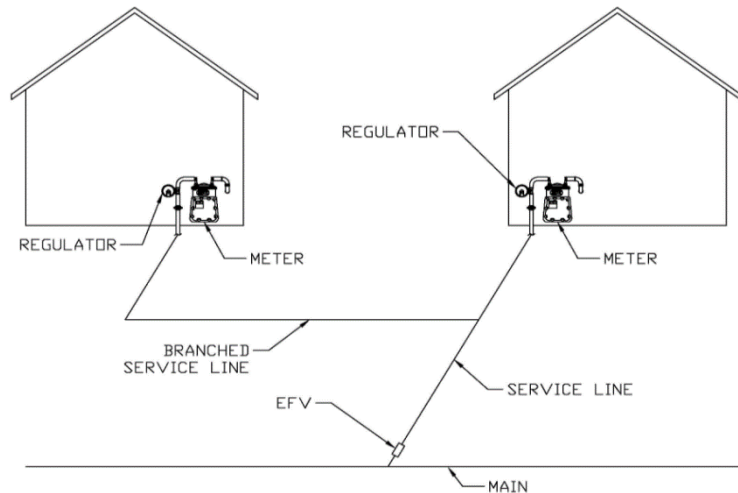


FIGURE 192.383C

[Editorial Note for LB: Delete title and drawing]

Branch Service Line Serving 2 Single Residences with 2 EFVs

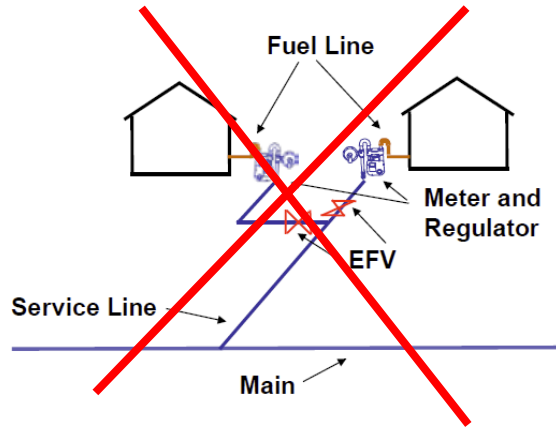
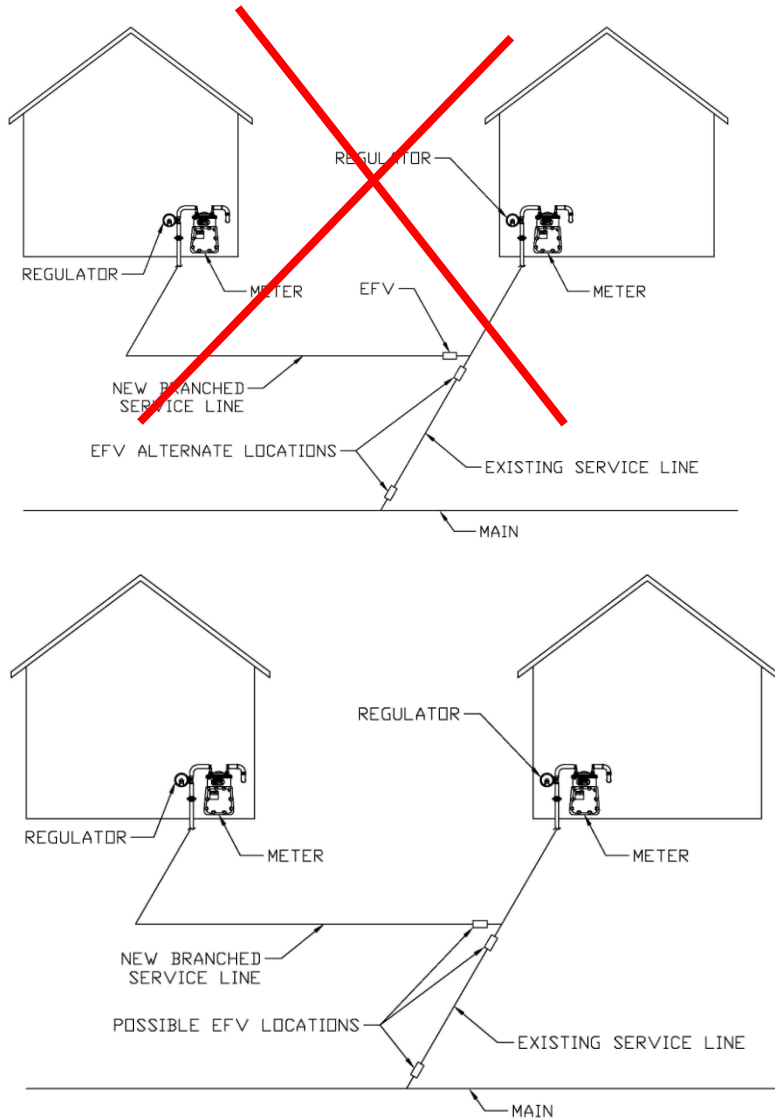


FIGURE 192.383D

[Editorial Note for LB: Add title, drawing, and note (top drawing from 1st LB is being changed to bottom version for 2nd LB)]

EFV for New or Replaced Branched Service on an Existing Single-Family Residence Service Line that Does Not Have an EFV Serving Two Single-Family Residences



Note: If a new or replaced branch service is going to be installed from an existing service line that does not have an EFV, then the EFV may be placed in one of three possible locations as shown in the figure above.

FIGURE 192.383D

1.4 *Service line supplying a multi-family residence.*
 Per-As required by §192.383(b)(4) and except for the limitations of §192.383(c), an operator must install an EFV on a service line to multi-family residences with a total meter capacity for the service line not exceeding 1,000 SCFH at the time of installation (Figure 192.383E).

[Editorial Note for LB: Add title and drawing]

EFV for Multi-Family Residence Where Total Meter Capacity for the Service Line Does Not Exceed 1,000 SCFH

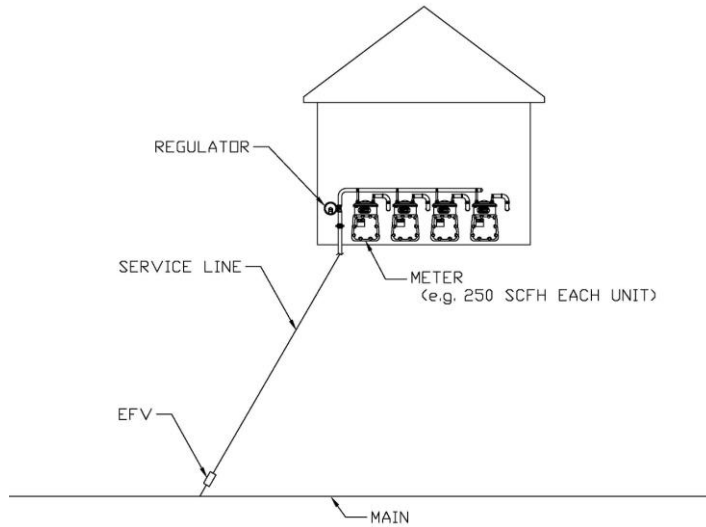


FIGURE 192.383E

1.5 Service line supplying a small commercial customer. Per-As required by §192.383(b)(5) and except for the limitations of §192.383(c), an operator must install an EFV on a service line to a small commercial customer with a meter capacity not exceeding 1,000 SCFH at the time of installation (Figure 192.383F).

[Editorial Note for LB: Add title and drawing]

EFV for Small Commercial Customer

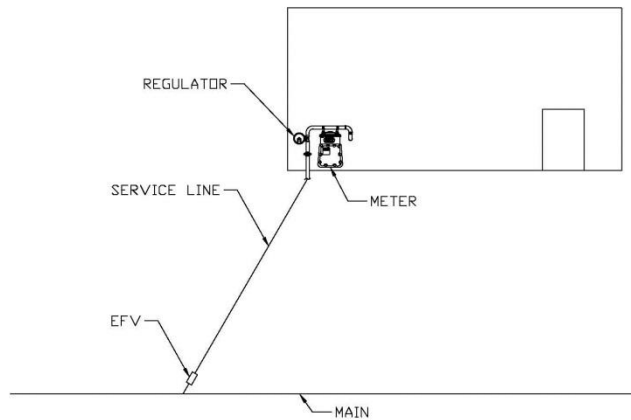


FIGURE 192.383F

GUIDE MATERIAL APPENDIX G-192-17

(See Part 191 and guide material under §§192.13, 192.603, 192.941, and 192.947)

EXPLICIT REQUIREMENTS FOR REPORTS, INSPECTIONS, TESTS, WRITTEN PROCEDURES, RECORDS, OR SIMILAR ACTIONS

{Add entry in table for §192.383 as follows:}

H	192.383	Excess flow valve installation	<u>Notification</u> Report
---	---------	--------------------------------	-------------------------------