



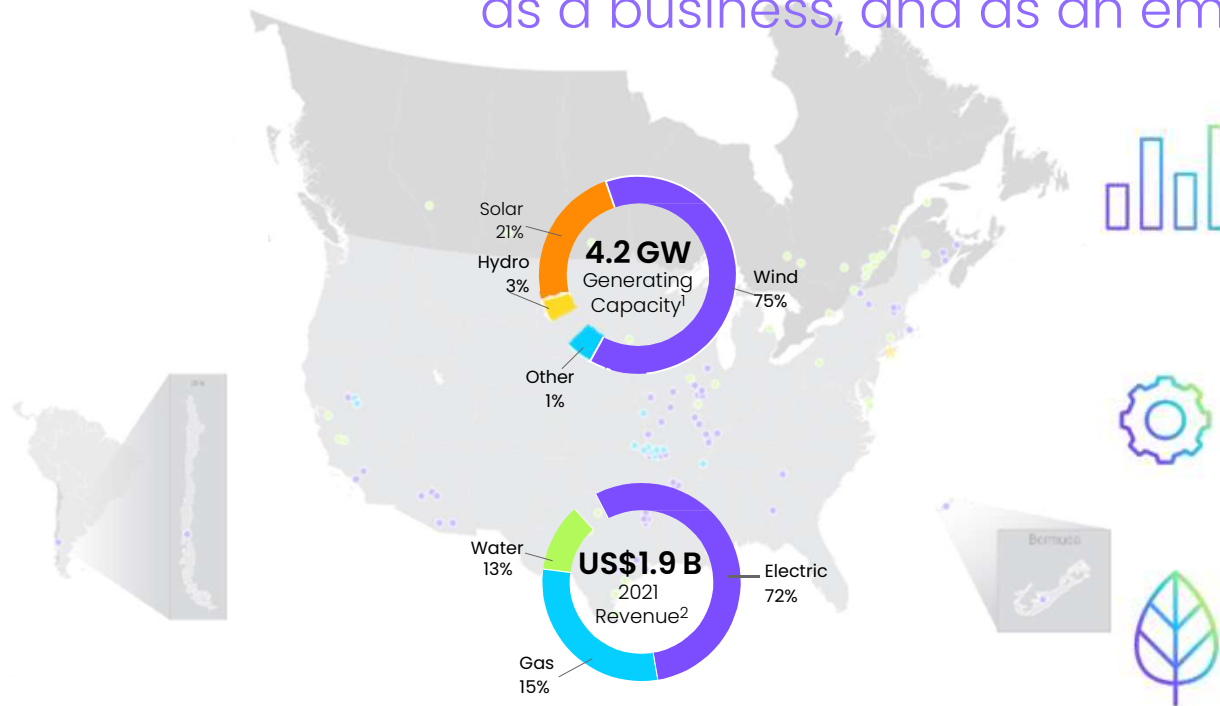
Living Our Safety Culture

# Advancing Safety Through Progressive Technology



# Liberty

Our purpose is *sustaining energy and water for life*, and it is demonstrated in everything we do as a business, and as an employee team.



## Growth

We've always been a leader in growth. We focus on sustainable, rapid growth through strategic acquisitions and the development of world-class renewables.

## Operational Excellence

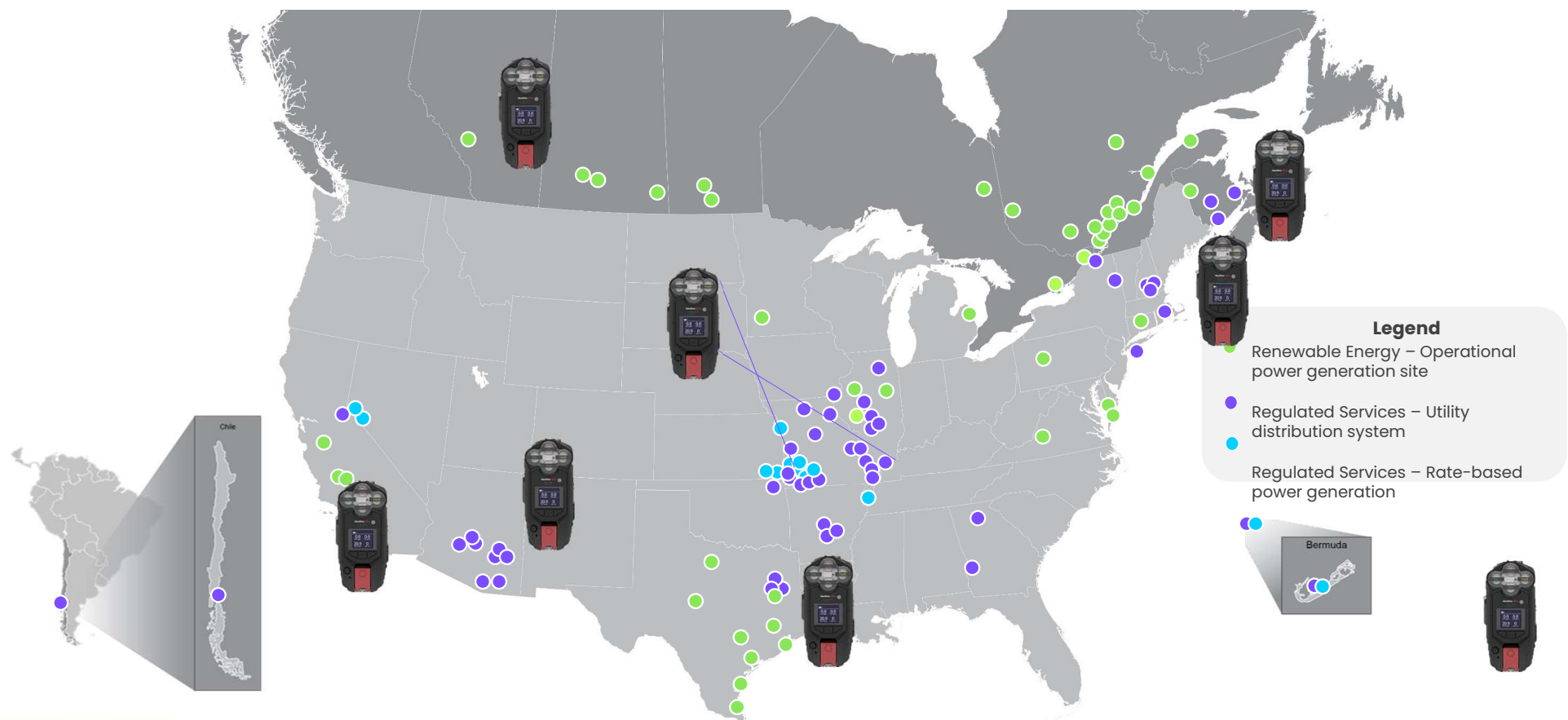
We believe in doing everything to the best of our capabilities. Our vision of operational excellence is focused on safety, security, and reliability.

## Sustainability

We partner with like-minded commercial and industrial customers to decarbonize their operations and reduce cumulative GHG emissions.



# Footprint of Lone Workers





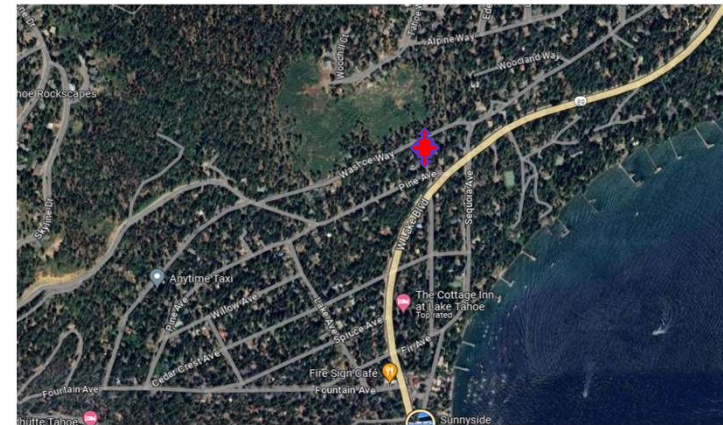
# West Region

A Meter Reader collapsed unexpectedly while walking meter reading route.

At 1:17, the EE texted co workers updating them on route progress.

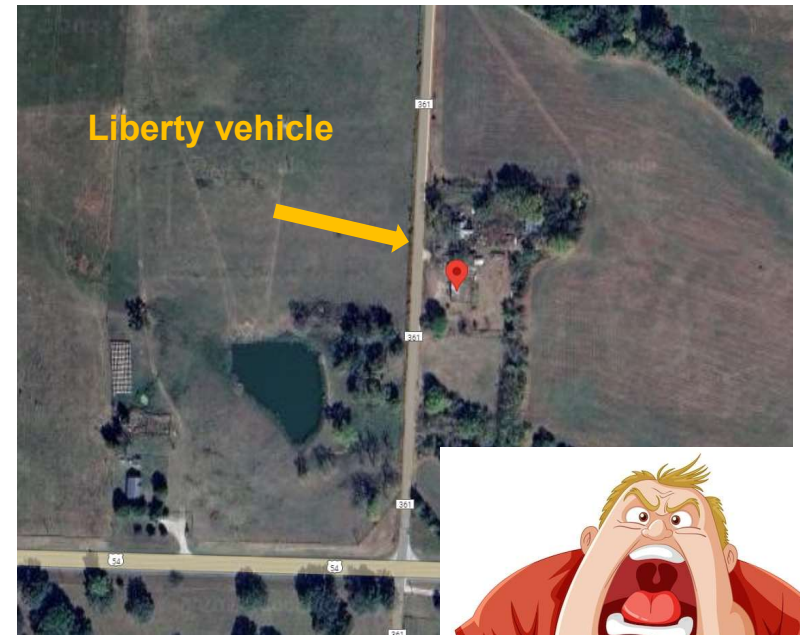
At 1:42, neighbors spotted a man lying face down in the snow, immediately called 911 and began CPR.

About 11 minutes later North Tahoe FD arrived and took over the scene, the EE was ultimately transferred to local hospital.



# Central Region

- Two Linemen were sent to a Customer site, for electric meter tampering. The address had previously been disconnected for nonpayment.
- At the site, a man located on the second floor of the house pointed a scope rifle at the Linemen, out of a window, and asked what they were there for. The Linemen responded, “to check the meter”, but the man told them to “get out”.
- The Linemen immediately left the site, and the Liberty Credit & Collections Rep notified the County’s Sheriff Dept.
- The man was arrested on Nov 7, 2023.





# East Region

- A troubleman responded to an electric service outage. 15" diameter, 60' tree was resting on the single-phase primary and telephone wires with a broken neutral.
- Troubleman called for a backup crew and started removing portions of the tree hanging over the road on top of the single phase with an insulated stick saw.
- He continued to work the tree, repositioning the bucket and cutting portions until he had one last 8' portion. While employee repositioned the bucket again, the tree came off at the butt end at the break, causing the 8' piece to break, bounce toward the employee and strike them in the back.



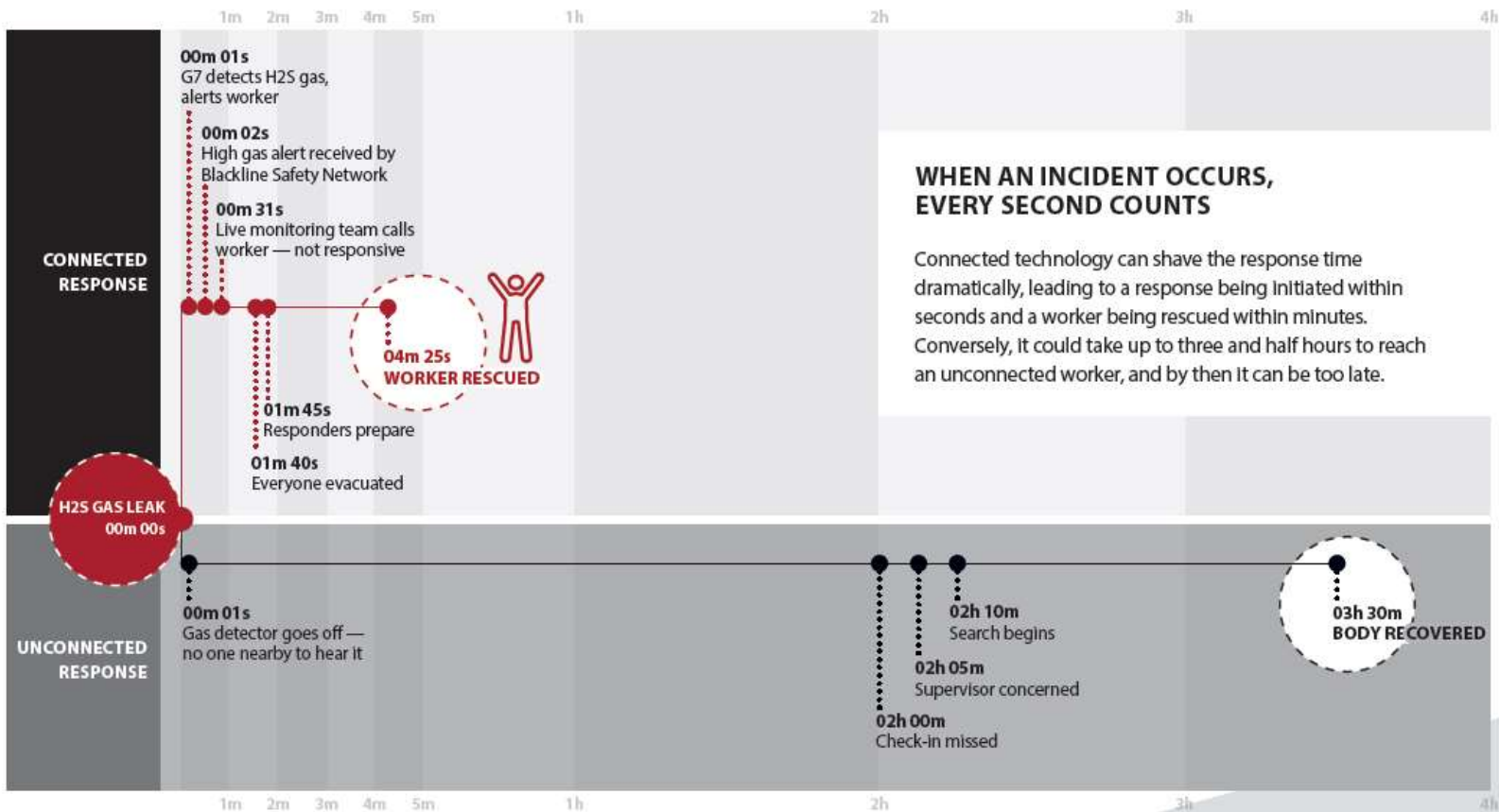
# Protecting Workers – Everywhere and Always

*Emergency Response, Lone Work, Remote Locations*

- Why
  - Every Second Matters
  - Reliable connectivity (cellular and satellite)
  - Consistency and visibility
  - Multiple birds with one stone (connected workers, gas detection, mass communications)
  - Compliance – OSHA 1910.269
  - World is changing...
- How
  - Revised policy
  - Engage Operations and frontline buy-in
- What
  - Provide connected wearable devices for lone workers across the organization



# What's the difference? Rescue vs Recovery





# Implementation Challenges

- Taking a real pulse – hazard risk assessment
- Challenging the status quo
- Unionized workforce – communicate and collaborate
- Perception of 'Big Brother'
- Funding – capital planning
- Utilization and Enforcement



