



2025 NATURAL GAS READINESS REGIONAL MINI-FORUM

WESTERN REGION

PORTLAND, OR ◦ JUNE 1

WELCOME



KIMBERLY DENBOW
VICE PRESIDENT, SECURITY & OPERATIONS
AGA

PROGRAM AGENDA

Working Lunch (12:00 to 1:00 PM)

- Welcome & Antitrust Compliance Guidelines
- Opening Remarks (Commissioner Ann Rendahl, Washington Utilities & Transportation Commission)
- Western/Northwestern Weather Forecast (Rod Hill, Portland Weather)

Break (1:00 to 1:15 PM)

General Session (1:15 to 2:20 PM)

- Western/Northwestern Electric Outlook (Kris Raper, WECC)
- Western/Northwestern Natural Gas Outlook (Dan Kirschner, NWGA)
- Northwest Gas/Electric Coordination Initiative (Crystal Ball, PNUCC, and Dan Kirschner]
- Natural Gas Case-Study – NW Mutual Assistance Agreement (Gary Venz, Williams NW Pipeline)
- General Session Closing Remarks (Commissioner Ann Rendahl)

Break (2:20 to 2:50 PM)

Regional Tabletop Emergency Exercise – Pacific NW and Southern California (2:50 to 4:30 PM)

By invitation only; no media

AGA ANTITRUST COMPLIANCE GUIDELINES & SAFETY CULTURE STATEMENT

Antitrust Compliance Guidelines

AGA and its members are committed to full compliance with all laws and regulations and to maintaining the highest ethical standards in the way we do business. This commitment includes strict compliance with federal and state antitrust laws. In the materials distributed with the agenda for this meeting, you will find guidelines outlining AGA's antitrust compliance policy and procedures. If you have any questions or concerns regarding antitrust issues, please feel free to raise them at any time during the meeting.

Safety Culture Statement

AGA and its member companies are committed to promoting positive safety cultures among their employees throughout the natural gas distribution industry. All employees, as well as contractors and suppliers providing services to AGA members, are expected to place the highest priority on employee, customer, public and pipeline safety.



Matthew Agen
Chief Regulatory Counsel, Energy
AGA

SAFETY MOMENT & HOUSEKEEPING

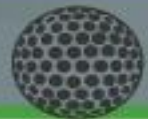
WHEN THUNDER ROARS GO INDOORS



Lightning Fatalities
For Outdoor Sports



40%
SOCCER



27%
GOLF



17%
RUNNING



10%
BASEBALL



3%
FOOTBALL



3%
OTHER



weather.gov/lightning

OPENING REMARKS



ANN RENDAHL
COMMISSIONER
WASHINGTON UTILITIES AND
TRANSPORTATION COMMISSION

WESTERN/NORTHWESTERN WEATHER FORECAST



ROD HILL
PORTLAND WEATHER



2025 NATURAL GAS READINESS REGIONAL MINI-FORUM

WESTERN REGION

BREAK

GENERAL SESSION



MATTHEW AGEN
CHIEF REGULATORY COUNSEL, ENERGY
AGA

PROGRAM AGENDA

General Session (1:15 to 2:20 PM)

- Western/Northwestern Electric Outlook (Kris Raper, WECC)
- Western/Northwestern Natural Gas Outlook (Dan Kirschner, NWGA)
- Northwest Gas/Electric Coordination Initiative (Crystal Ball, PNUCC, and Dan Kirschner]
- Natural Gas Case-Study – NW Mutual Assistance Agreement (Gary Venz, Williams NW Pipeline)
- General Session Closing Remarks (Commissioner Ann Rendahl)

Break (2:20 to 2:50 PM)

Regional Tabletop Emergency Exercise – Pacific NW and Southern California (2:50 to 4:30 PM)

By invitation only; no media

WESTERN/NORTHWESTERN ELECTRIC OUTLOOK



KRIS RAPER
VICE PRESIDENT, STRATEGIC ENGAGEMENT &
EXTERNAL AFFAIRS
WESTERN ELECTRICITY COORDINATING COUNCIL

WESTERN/NORTHWESTERN NATURAL GAS OUTLOOK



DAN KIRSCHNER
CEO
NORTHWEST GAS ASSOCIATION

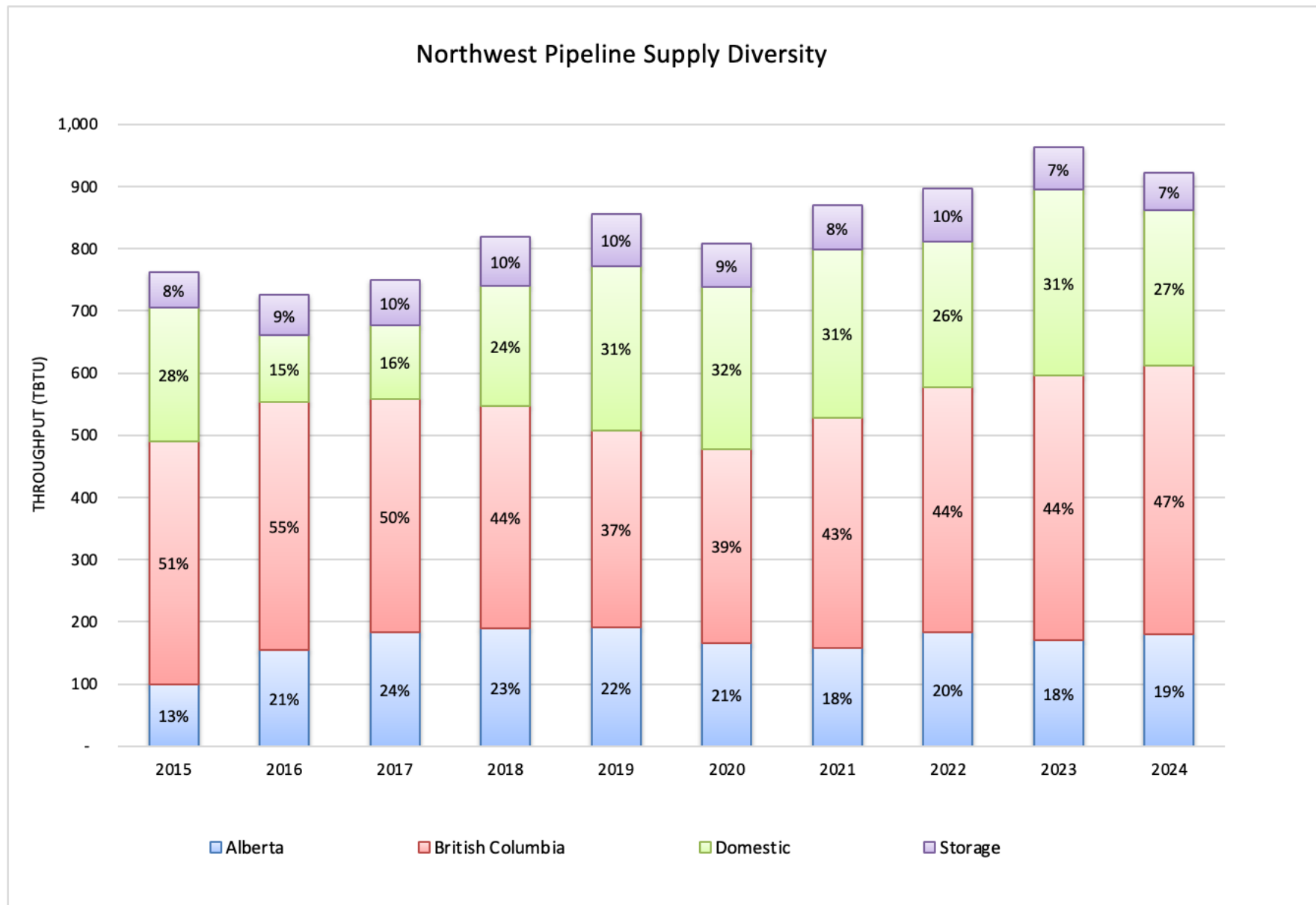
Natural Gas Landscape

Dan Kirschner, CEO
Northwest Gas Association

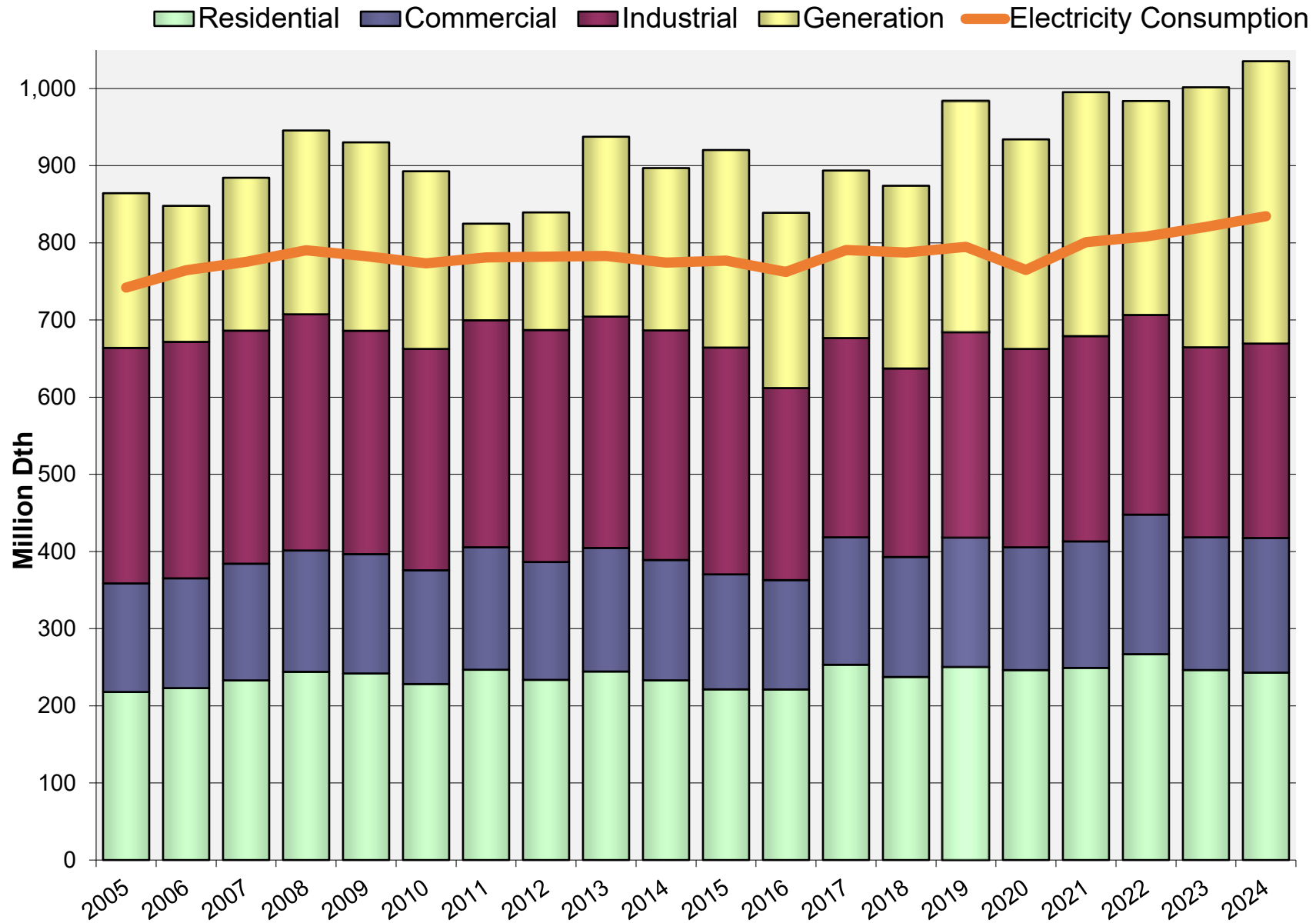
By the Numbers

State/Province	Households / Businesses	Pipeline (miles / km)
British Columbia	976,170 / 99,404	35,500 / 59,200
Idaho	465,632 / 46,550	19,600 / 32,600
Oregon	804,961 / 85,782	31,000 / 52,000
Washington	1,279,608 / 112,067	46,600 / 77,700
TOTAL	3,526,371 / 343,803	132,700 / 221,500

Supply Sources

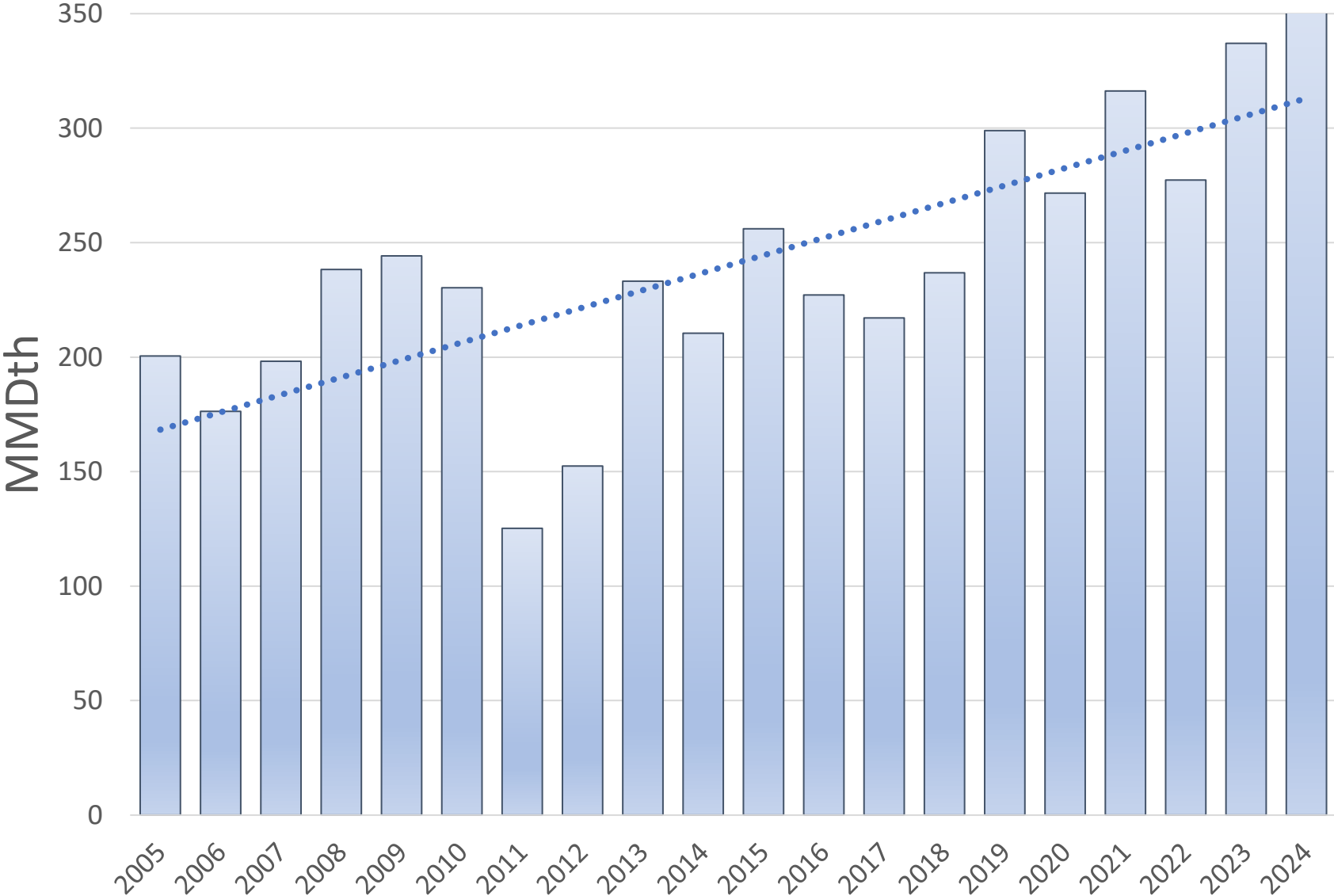


Historic Gas Demand - Regional



Generation Demand

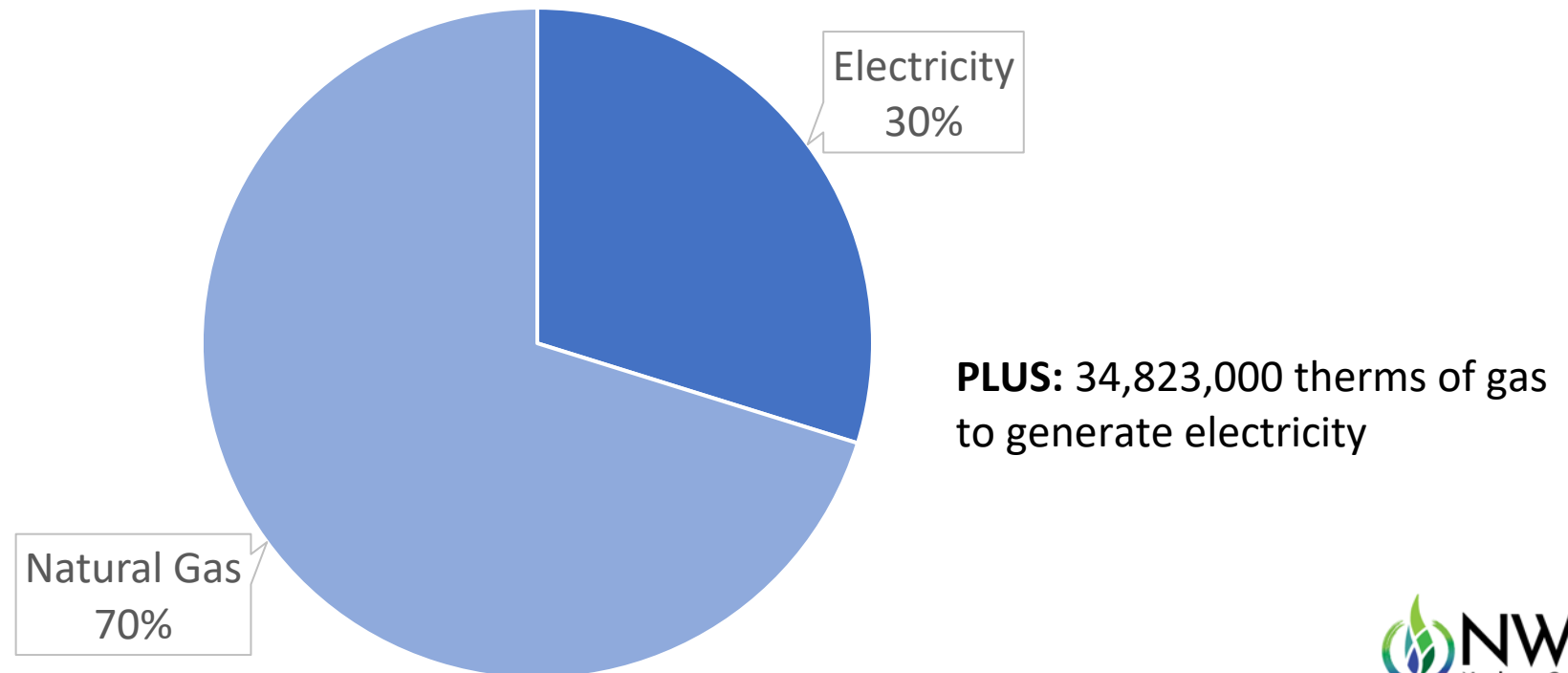
Source: U.S. Energy Information Administration; Statistics Canada



January 14, 2024, 9am-10am (OR/WA):

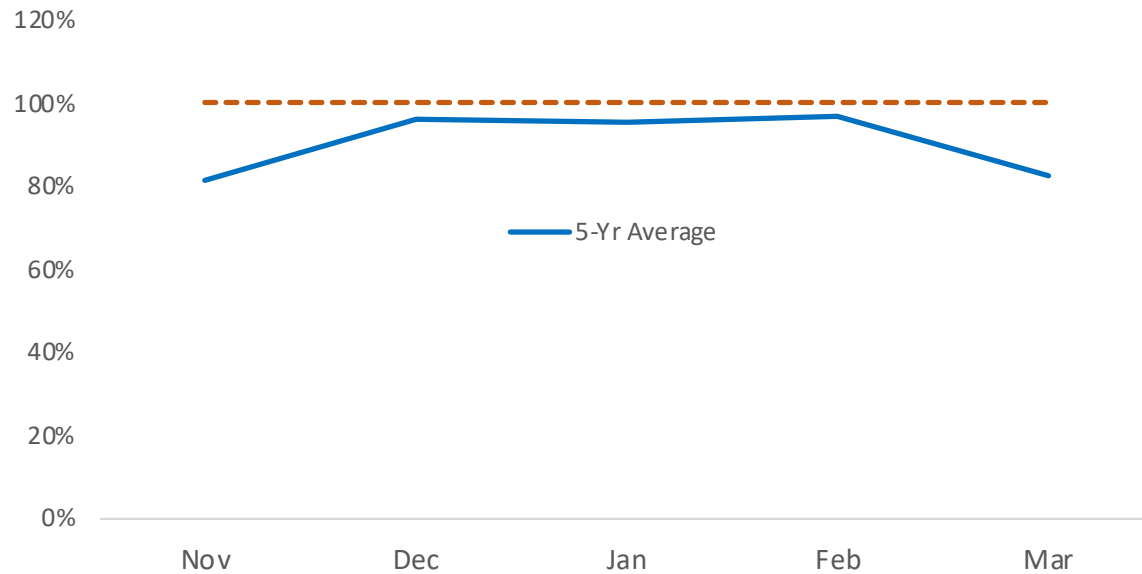
- **64 GWh delivered via gas system (2,200,000 therms)**
- **27 GWh delivered via electric system (921,000 therms)**

OR & WA Combined



Pipeline Utilization

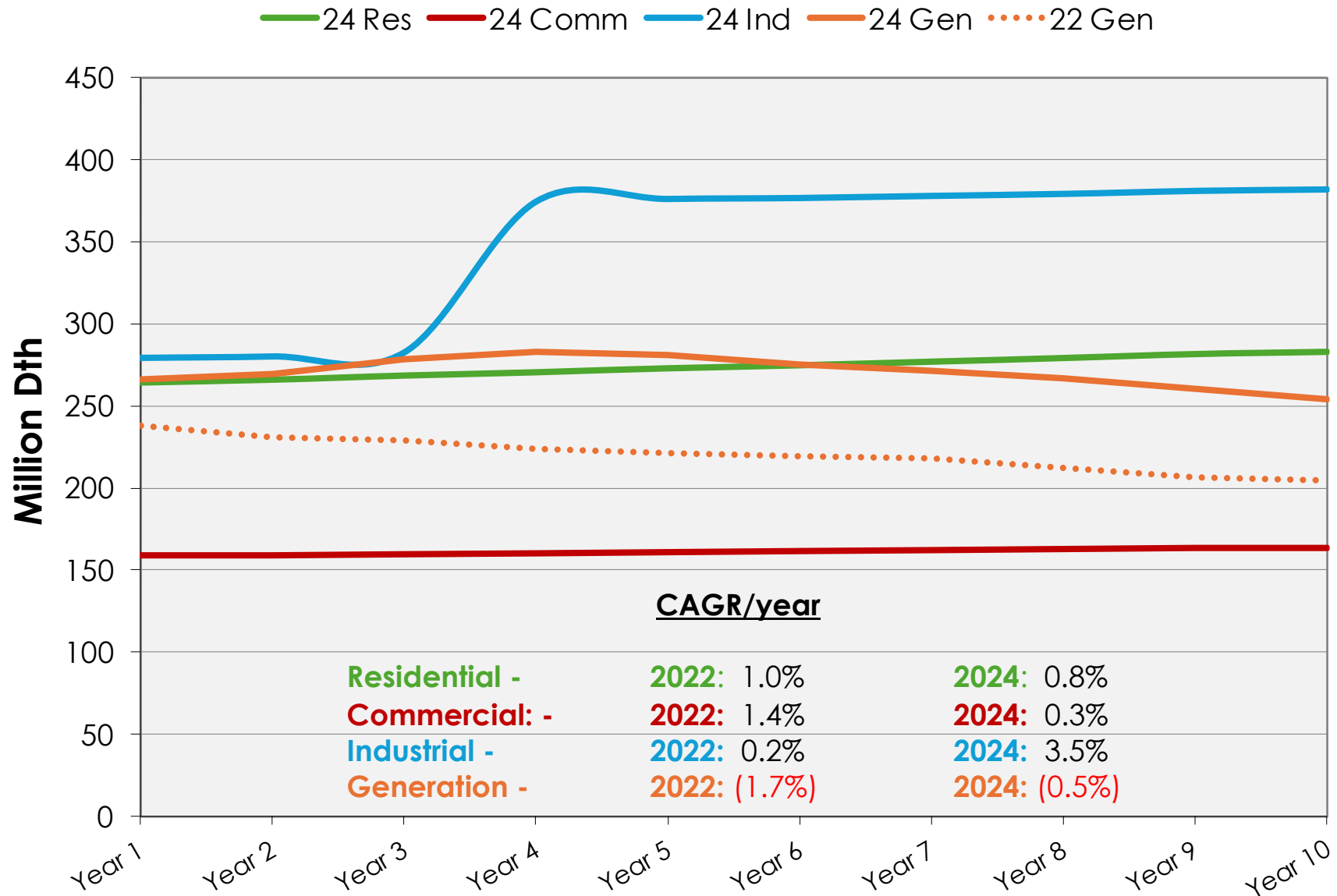
PNW Pipeline Utilization



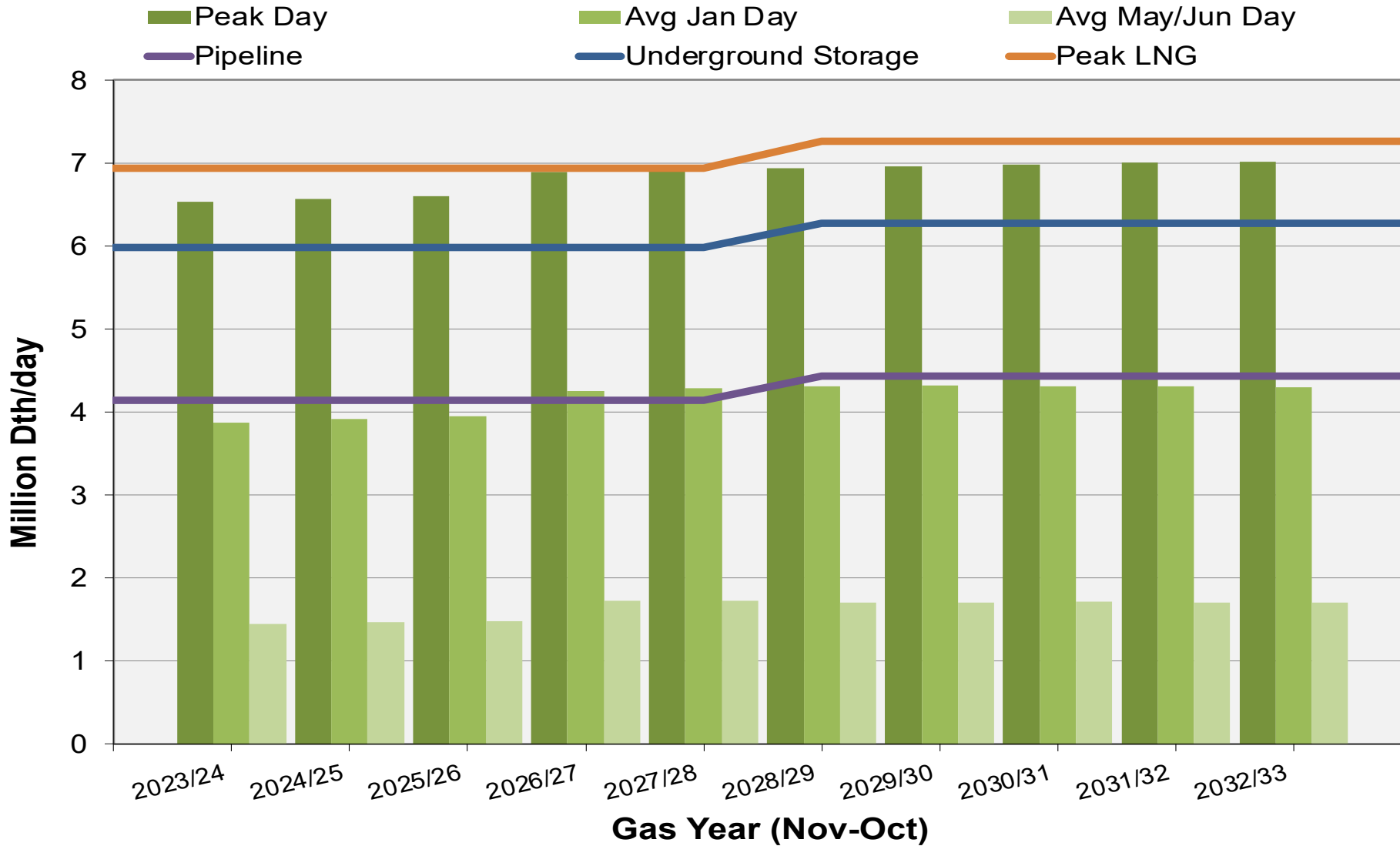
	Nov	Dec	Jan	Feb	Mar
2018/19 Winter	82%	100%	108%	118%	94%
2019/20 Winter	84%	97%	96%	91%	85%
2020/21 Winter	77%	90%	89%	95%	81%
2021/22 Winter	75%	93%	94%	88%	67%
2022/23 Winter	88%	101%	89%	93%	85%

Load Factor	Nov	Dec	Jan	Feb	Mar
Max	88%	100%	100%	100%	94%
Min	75%	90%	89%	88%	67%
5-Yr Average	81%	96%	95%	97%	82%
	100%	100%	100%	100%	100%

10 Year Annual Demand Forecast



Peak/Avg Supply Demand Balance





NWGA

Northwest Gas Association

1914 Willamette Falls Dr., #260
West Linn, OR 97068
(503) 344-6637
www.nwga.org

Questions?

Dan Kirschner, Executive Director

dkirschner@nwga.org

M - (503) 880-7269

Natasha Jackson, State Affairs Director

njackson@nwga.org

M - (208) 446-8616



NORTHWEST GAS/ELECTRIC COORDINATION INITIATIVE



CRYSTAL BALL
EXECUTIVE DIRECTOR
PACIFIC NORTHWEST UTILITIES
CONFERENCE



DAN KIRSCHNER
CEO
NORTHWEST GAS ASSOCIATION

NATURAL GAS CASE-STUDY – NW MUTUAL ASSISTANCE AGREEMENT



GARY VENZ
DIRECTOR, COMMERCIAL SERVICES
WILLIAMS NORTHWEST PIPELINE



WE MAKE CLEAN
ENERGY HAPPEN®

Northwest Mutual Assistance Agreement

2025 Natural Gas Readiness Regional Mini-Forum

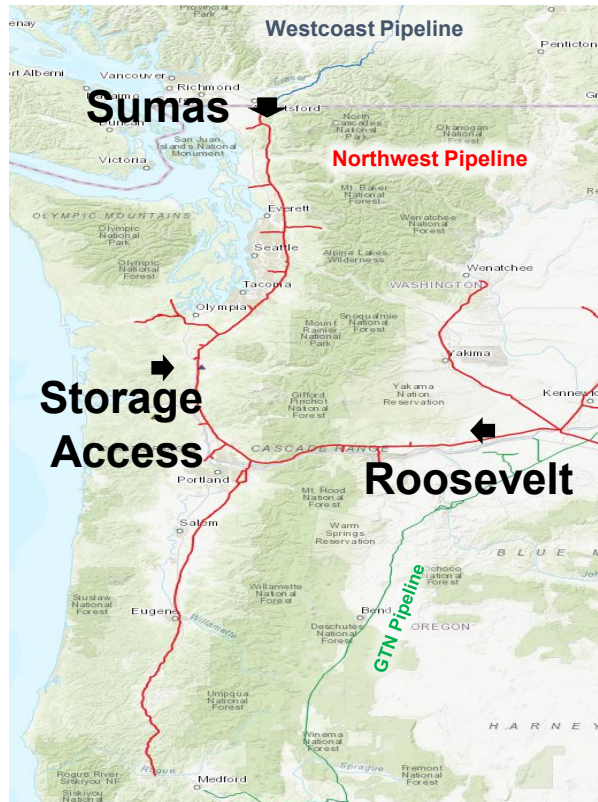
Portland, Oregon

June 1, 2025

Northwest Mutual Assistance Agreement (NWMAA) Overview

- Comprises entities operating or controlling natural gas transportation or storage facilities in the Pacific Northwest.
- Includes regional pipelines, LDCs, power generators, and large industrial users.
- Members commit to due diligence in operations and planning to ensure firm gas supply during emergencies.
- Participation is 100% voluntary—assistance is provided only if requested, offered, and accepted.
- NWMAA coordination can reduce the duration of emergency conditions.
- Goal: Restore normal service as quickly as possible.
- Members meet twice annually:
 - Share resources and build networks.
 - Participate in an annual tabletop emergency exercise.
- Administered by the Western Energy Institute.

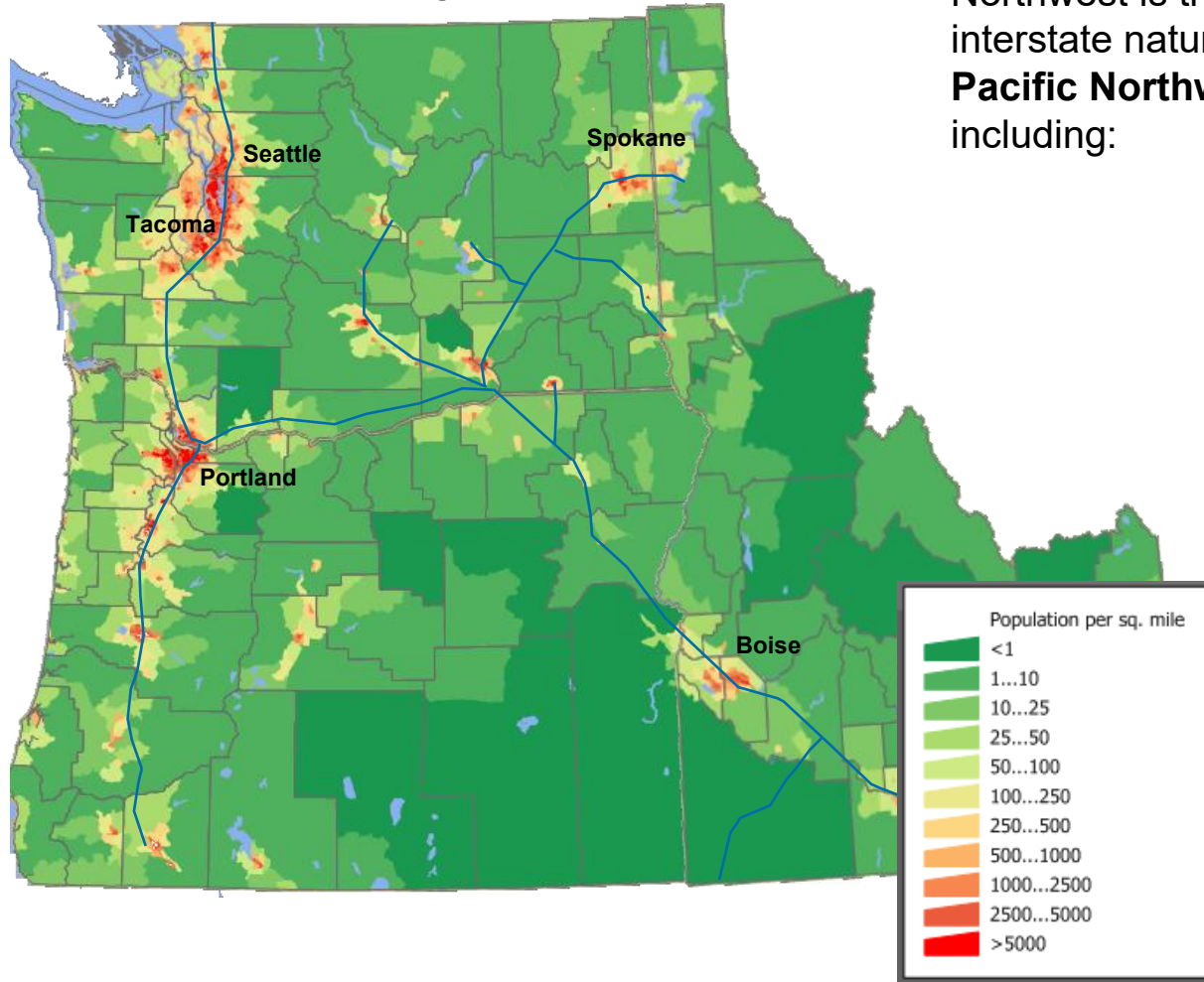
Northwest Pipeline Market Area (I-5 Corridor) Introduction



- Local Utilities, Power Generation Plants, and Industrial Facilities rely on Northwest Pipeline as the primary source of gas in significant portions of Western Washington and Oregon
- Northwest is bi-directional and enables customers to transport gas from Canadian or Domestic supply sources, with gas entering the market area at Sumas Receipt or through Roosevelt Compressor:
 - Sumas Receipt can receive up to 1.3 Bcf/d of Canadian production from Westcoast Pipeline at the Canadian border
 - Roosevelt Compressor can flow up to 0.55 Bcf/d from multiple domestic interconnects and producers
- Jackson Prairie Storage (~25 Bcf capacity) can deliver up to 1.2 Bcf/d into the market area and is used for system balancing by Northwest Pipeline

Northwest Pipeline Market Area Introduction

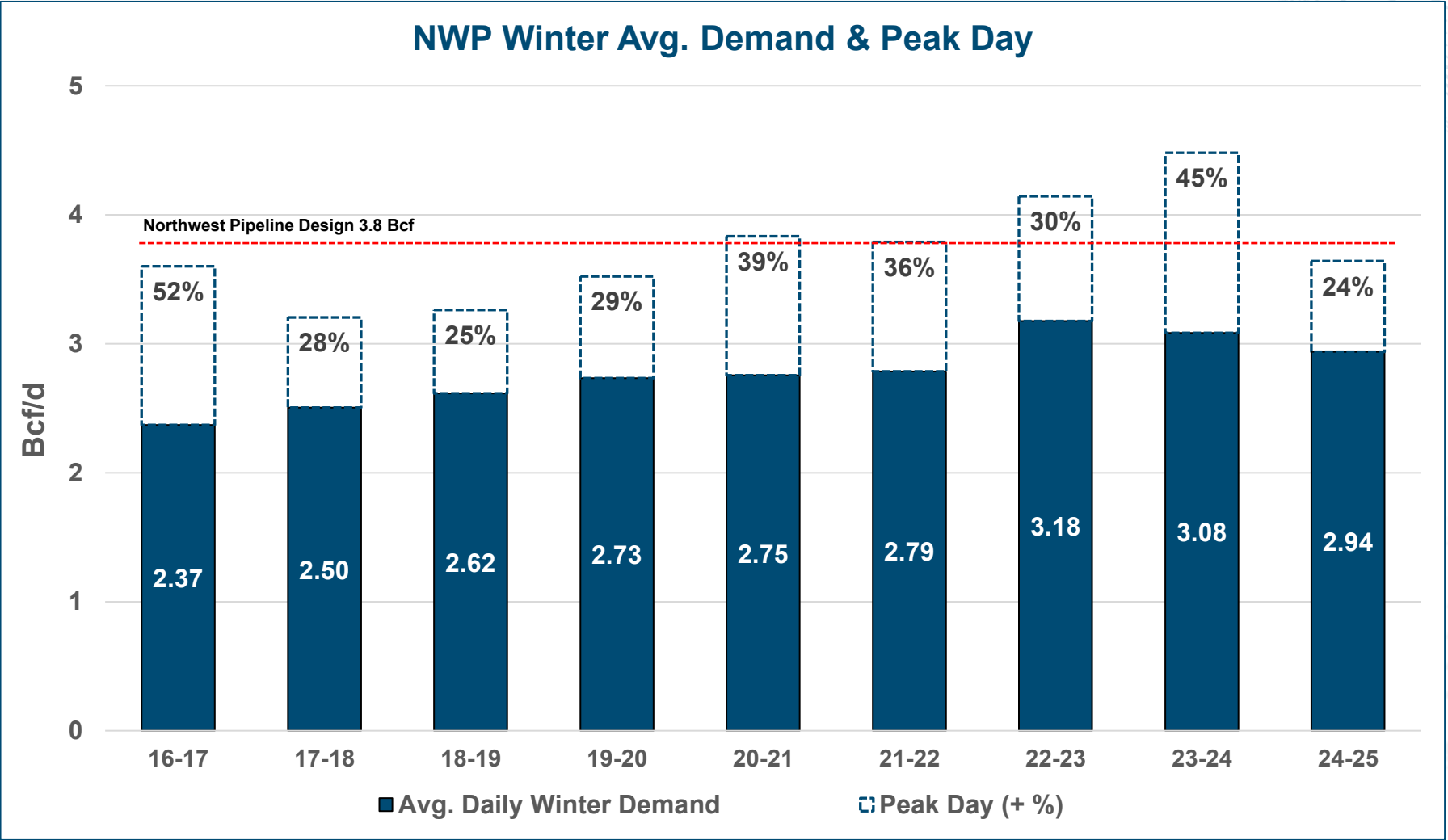
Population Density Per Square Mile



Northwest is the **sole provider** of significant interstate natural gas transportation services to the **Pacific Northwest's primary market areas** including:

- Seattle
- Tacoma
- Portland
- Boise

Northwest Pipeline Critical Market Area Infrastructure

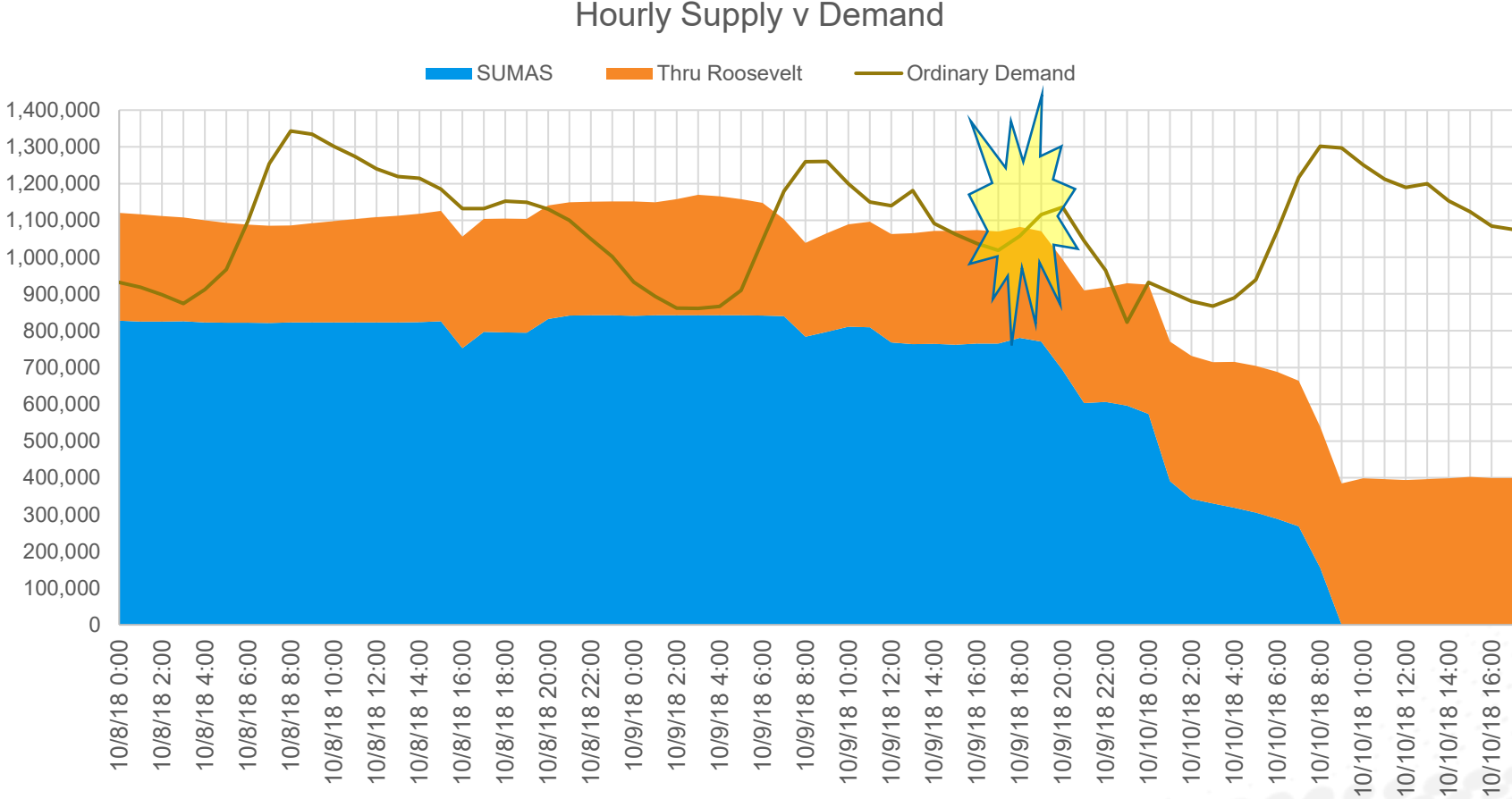


NWMAA – Activated Three Times Since Fall 2018

British Columbia Pipeline Incident October 2018

- BC Pipeline ruptured on a 36-inch diameter upstream pipeline
- Significant interruption to gas supply at Northwest's Sumas, Washington receipt point
- Deliveries at Sumas immediately began to fall
- It was recognized the market would be in extreme danger of losing service to critical residential and other core loads
- Activation of the NWMAA provided coordinated support to redirect needed supply to Vancouver, BC and Pacific Northwest to mitigate catastrophic event

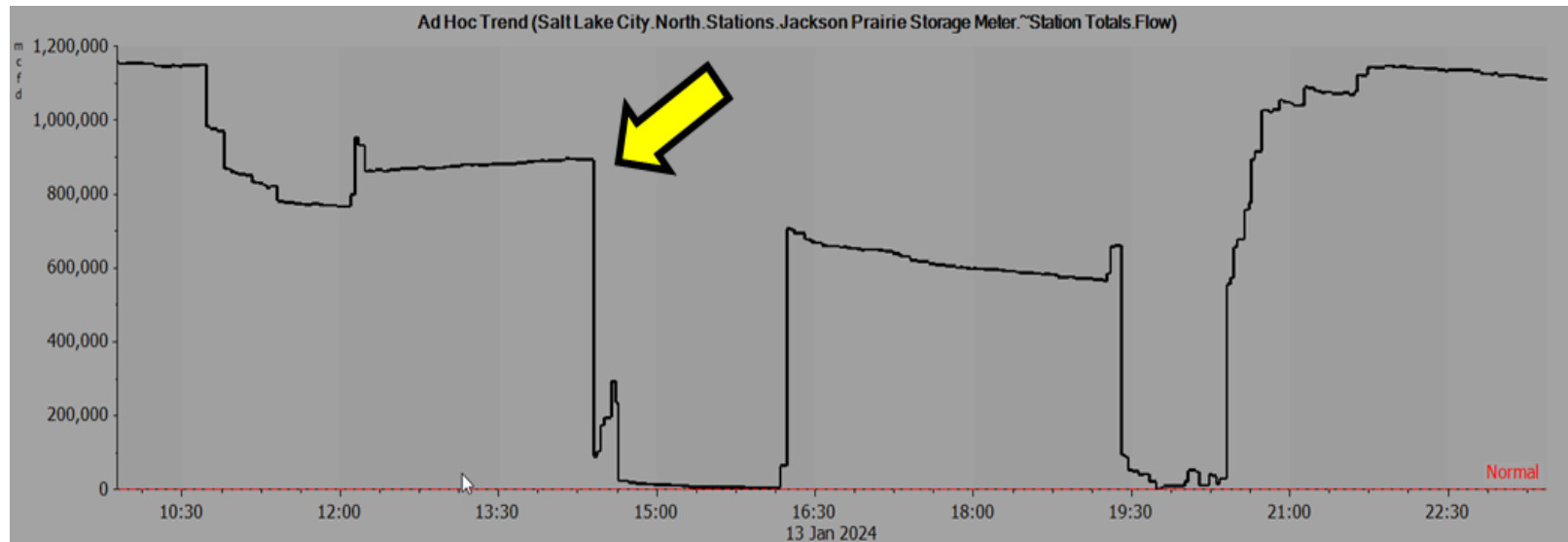
Critical Operating Condition – October 2018



NWMAA – Activated Three Times Since Fall 2018

Jackson Prairie Storage Outage – MLK Weekend 2024

- Communications at the facility caused JP to completely shut down. Cause was unknown at the time. Free flow was not an immediate option for remediation
- Customer nomination was net 1,087,422 Dth
- Current physical withdrawal was 984,000 Dth
- At this time, free flow was not an option



Key Takeaways

- Preparedness is a Shared Responsibility
 - The region's gas infrastructure is highly interdependent.
 - Every member plays a vital role in system resilience.
- NWMAA: A Proven Emergency Framework
 - Successfully activated during major events (2018, 2024).
 - Demonstrated value of rapid, coordinated response.
- Voluntary Cooperation, Real Impact
 - Though voluntary, NWMAA collaboration has reduced the severity and duration of emergencies.
 - Member support is the foundation of regional energy security.
- Tabletop Exercises = Real-World Readiness
 - Annual mock emergencies:
 - Test communication protocols.
 - Strengthen inter-company relationships.
 - Prepare members for real events.

Looking Ahead

- Know Your Network
 - Relationships built today enable faster coordination tomorrow.
- Continuous Improvement
 - As demand grows and infrastructure ages, preparedness must evolve.
- Final Thought:
 - “When the unexpected happens, be ready—together.”
 - Readiness today ensures resilience tomorrow.

GENERAL SESSION CLOSING REMARKS



ANN RENDAHL
COMMISSIONER
WASHINGTON UTILITIES AND
TRANSPORTATION COMMISSION